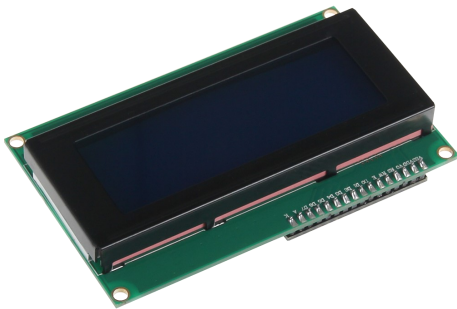
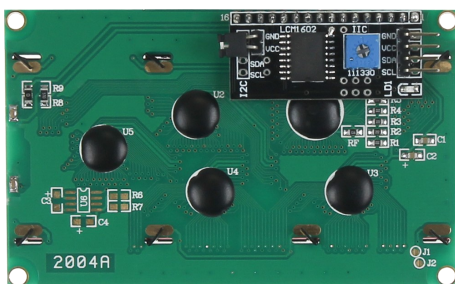


I2C SERIAL 20X4 LCD MODULE

SBC-LCD20x4



This 20x4 character LCD suits perfectly for your project. It works with a PCF8574 adapter chip and a blue backlight. Moreover, it is conforming to the HD44780 industrial standard.



MAIN FEATURES

Model	Serial I2C 20x4 2004 LCD module
Characters	20 x 4 characters (4 rows with 20 columns)
Adapterchip	PCF8574
Compatible with	Raspberry Pi
Special feature	Soldered I2C-communication-adapter: Only 4 I/O lines are needed (power supply + 2 data-lines)
Dimensions	9,8 x 6 x 2 cm
Scope of delivery	Serial I2C 20x4 2004 LCD module

FURTHER SPECIFICATIONS

Address range	0 x 20 - 0 x 27
Industrial standard	HD44780
Backlight	Blue
Logic level	3.3 V & 5 V (by a power supply of 5V)

FURTHER DETAILS

Article No.	SBC-LCD20x4
EAN	4250236813226
Customs tariff No.	8473302000