

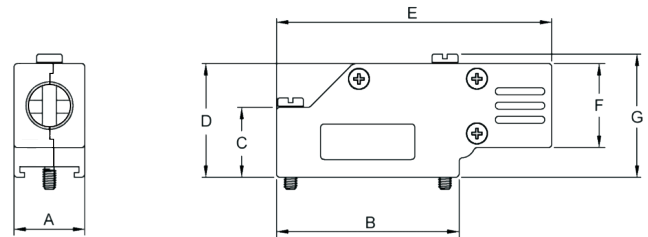
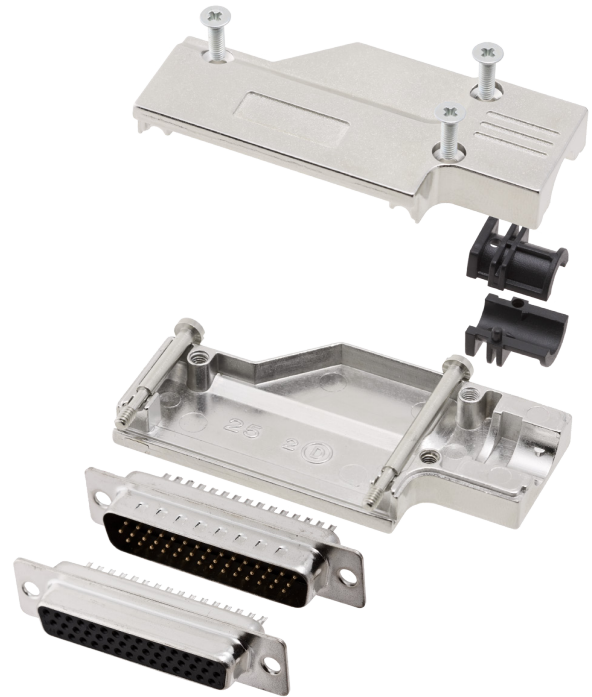
**TECHNICAL SPECIFICATIONS**

**D-Sub Hood:**

Material: Zinc, Nickel Plated  
 Operating Temperature: -40°C to +120°C  
 Cable Entry: 90° Side Entry  
 Jackscrews: UNC 4-40  
 Cable O.D: Up to 11,5mm  
 Type of grommets: 2 piece Plastic Ferrule Kit

**D-Sub High Density:**

Insulator: PBT, Black, UL94 V-0  
 Shell: Stamped Steel, Tin Plated  
 Contact pins: Copper Alloy  
 Stamped & Formed pins: 100 inserts min  
 Contacts Plating: Selective Gold over Nickel  
 Operating Temperature: -55°C to +105°C  
 Withstanding voltage: 500V for 1 minute



D-Sub-Hood

**Features:**

- Available in sizes 15-26-44-62  
 Other sizes on request
- Suitable for any common Sub-D connector
- Re-Openable

Size	A	B	C	D	E	F	G
9	15,0	31,0	15,0	24,0	51,0	18,0	26,5
15	15,3	39,2	15,0	24,0	59,0	18,0	26,5
25	16,0	54,0	23,0	34,5	73,0	24,5	37,0
37	16,0	70,5	23,0	34,5	89,5	24,5	37,0

**Ordering information:**

**D-Sub Connector Kits (100 inserts min.)**

Size:	P/N - Kitted:	Product Code - MALE Conn. Kit
HD 15	6355-0066-01	DCMR09-FK-HDP15-K
HD 26	6355-0066-02	DCMR15-FK-HDP26-K
HD 44	6355-0066-03	DCMR25-FK-HDP44-K
HD 62	6355-0066-04	DCMR37-FK-HDP62-K

Size:	P/N - Kitted:	Product Code - FEMALE Conn. Kit
HD 15	6355-0066-11	DCMR09-FK-HDS15-K
HD 26	6355-0066-12	DCMR15-FK-HDS26-K
HD 44	6355-0066-13	DCMR25-FK-HDS44-K
HD 62	6355-0066-14	DCMR37-FK-HDS62-K