

BENNING

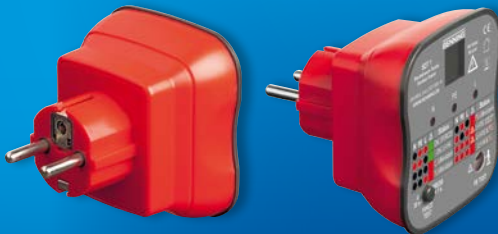
SDT 1

Socket Tester

NEW!



quick & easy testing



plug types E+F (CEE 7/7)

BENNING SDT 1 socket tester with contact sensor for active PE error detection and for testing the tripping function of a 30 mA RCD

- quick and easy testing of shock-proof sockets for correct connection
- contact sensor warns of a dangerous contact voltage at the PE contact via the LC display
- unambiguous indication via LEDs and LC display
- FI/RCD TEST key for tripping 30 mA RCDs



original size

dupol@benning.de • Tel.: +49 / (0) 2871 / 93-111

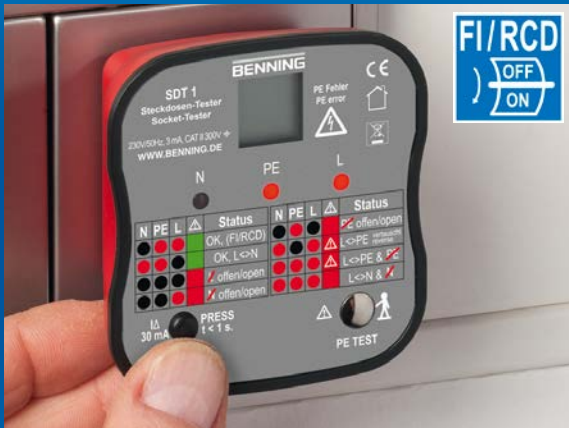
www.benning.de



Socket is installed correctly, contact sensor checks the PE contact for dangerous contact voltage



Socket with wiring error, danger to life! External conductor (L) and protective conductor (PE) have been inverted!



Testing the tripping function of a 30 mA RCD by pressing the FI/RCD TEST key

BENNING SDT 1

BENNING SDT 1 socket tester with contact sensor for active PE error detection and for testing the tripping function of a 30 mA RCD

Application:

Quick and easy testing of shock-proof sockets, cable reels and extension cables for correct connection. Wiring errors and inadmissibly high contact voltages at the PE connection are indicated directly. In addition, it is possible to test the tripping function of a 30 mA RCD by pressing the FI/RCD TEST key.

Testing functions:

- Indication of correct wiring via LEDs.
- Wiring errors such as missing PE, N and L conductors as well as an inversion of the L and PE conductors are clearly indicated via three LEDs.
- An active PE test by means of a contact electrode and via the LC display warns of a dangerous contact voltage (> 50 V) being applied to the PE connection.
- FI/RCD TEST key for testing the tripping function of 30 mA RCDs.

Features:

- Safe and easy operation by trained personnel
- An easily understandable status table provides information about the correct connection (OK, green) and the type of existing errors (red) at the shock-proof socket.

Status table:

N	PE	L	⚠	Status	N	PE	L	⚠	Status
●	●	●	●	OK, (FI/RCD)	●	●	●	●	PE offen/open
●	●	●	●	OK, L↔N	●	●	●	⚠	L↔PE vertauscht reverse
●	●	●	●	↘ offen/open	●	●	●	⚠	L↔PE & PE
●	●	●	●	↘ offen/open	●	●	●	●	L↔N & ↘

Technical data	BENNING SDT 1
Indication:	visually by means of three red signal LEDs for N, PE, L conductor and LC display „⚠“
Voltage range:	230 V AC, ± 10 %
Frequency range:	50 Hz - 60 Hz
PE test response threshold:	U _B < 50 V AC to earth
RCD testing current:	I _{ΔN} approx. 30 mA
Power supply:	via test object (no batteries required)
Measuring category:	CAT II 300 V
Safety:	DIN EN 61010-1, DIN EN 61010-2-033
Appliance dimensions:	80 x 72 x 78 mm (l x w x h)
Weight:	70 g
Item no.:	020053
Recommended retail price:	

Your specialist dealer:



BENNING Elektrotechnik und Elektronik GmbH & Co.KG
 Münsterstraße 135-137 • D-46397 Bocholt
 Tel.: + 49 / (0) 2871 / 93-111 • Fax: + 49 / (0) 2871 / 93-429
 www.benning.de • E-Mail: duspol@benning.de