

Range overview

Discover our LED Professional lamps:



And also our MatchLine LED Color Check lamps:



MDLS CRI MatchLine



PJH20

Register your product and get support at
www.philips.com/support

Philips LED MDLS CRI MatchLine



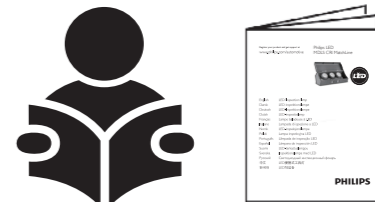
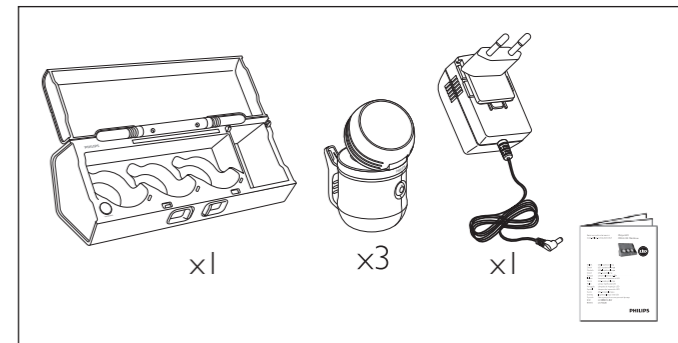
English	LED Inspection lamp
Dansk	LED inspektionslampe
Deutsch	LED-Inspektionslampe
Dutch	LED-inspectielamp
Français	Lampe baladeuse à LED
Italiano	Lampada di ispezione a LED
Norsk	LED-inspeksjonslampe
Polski	Lampa inspekcyjna LED
Português	Lâmpada de inspeção LED
Español	Lámpara de inspección LED
Suomi	LED-tarkastuslamppu
Svenska	Inspektionslampe med LED
Русский	Светодиодный инспекционный фонарь
中文	LED便携式工具灯
한국어	LED작업등



www.philips.com/automotive

The Manufacturer and Importer:
Lumileds Germany GmbH,
Philipsstrasse 8, 52068 Aachen, Germany

Register your product and get support at
www.philips.com/support



The Philips trademarks are used under license from Koninklijke Philips N.V. (2016)
© Lumileds Holding B.V. 2016. All rights reserved
www.philips.com/automotive

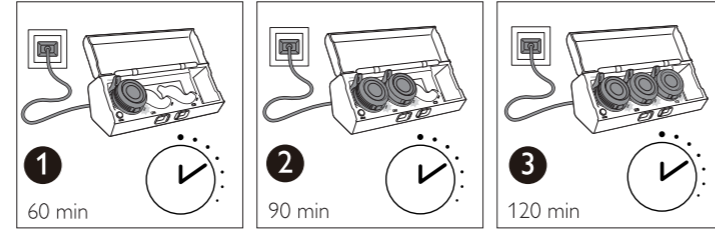
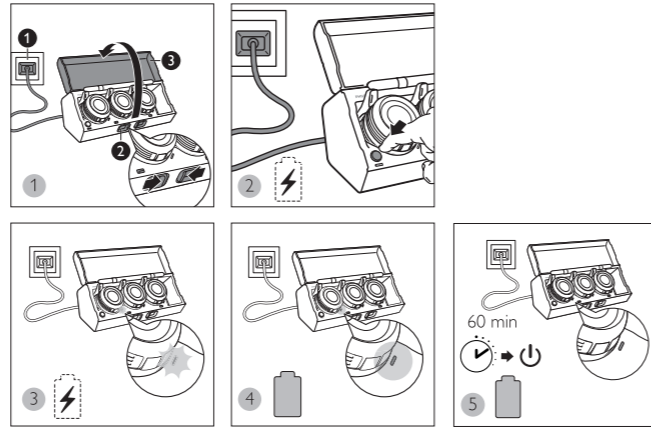
3211 0082 1581

PHILIPS

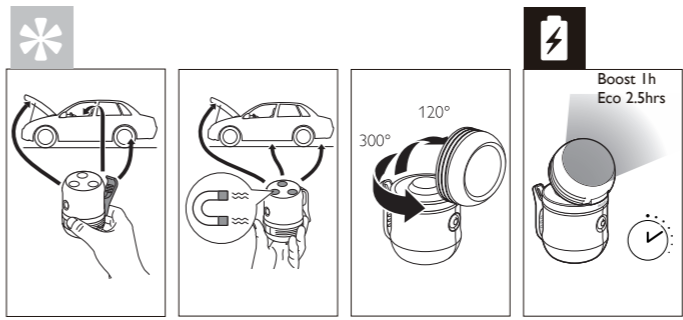
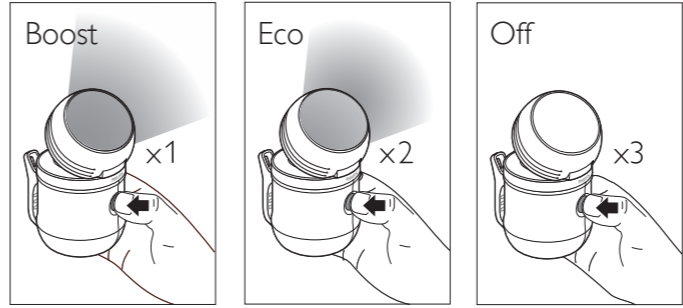
3  















4  



5 



6 

Description	
	Operating line voltage 100-240V/Output 12V/1.5A
	Charging time @25°C 60RH 1h for 1 lamp/2hrs for 3lamps <small>*Charge at a very low temperature such as below 0°C will get a lower capacity and reduce cycle life of the battery.</small>
	Light output (Lumens) @25°C 60RH (Up to) Boost 500lm Eco 250lm
	Battery performance @25°C 60RH (Up to) Boost 1h Eco 2.5hrs
	Color Rendering Index High CRI92 MatchLine
	Lamp module 300°&120° Rotating
	Impact protection rating IK07
	Ingress protection rating IP54
	Operating temperature -10°C to 50°C / -14°F to 122°F (US)
	Adaptor operating temperature 0°C to 40°C / 32°F to 104°F (US)
	Storage temperature -20°C to 60°C / -4°F to 140°F (US)
	Magnet Yes