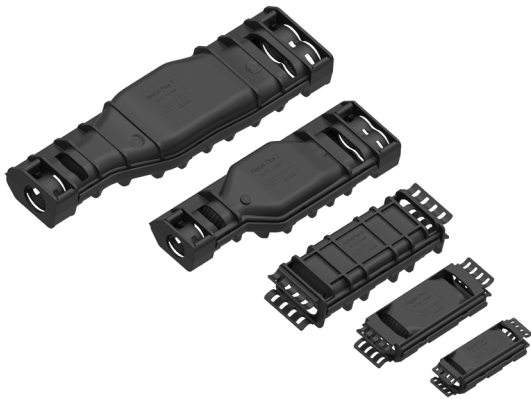


RAYGEL PLUS JOINTS

Filled with PowerGel for single and multi-core polymeric cables 0.6/1 kV

Easy to install - Reliable in sealing



RayGel Plus joint series

Application

- Street, garden and pool lighting
- Connection of outdoor equipment like pumps, filters, garage door openers, loudspeakers, door intercom systems, etc.
- Frost protection systems
- Cable trays and cable ducts
- Protection of small electronic boards
- And many more...

Features and benefits

- Quick, easy and clean installation
- Reliable protection against humidity and water
- Suitable for outdoor and direct-buried applications (IP 68)
- Full branch capabilities without cutting of main cables
- Optimized joint design with integrated strain relief
- Easy to install, latchable connector blocks
- Qualified to international joint standard CENELEC EN 50393
- Halogen-free and UV-resistant
- Unlimited shelf life
- Environment-friendly and no subject to labeling requirements

PowerGel sealing gel technology

The RayGel Plus enclosure, with its revolutionary PowerGel sealing gel, covers and seals the joint quickly and easily, saving both time and effort. PowerGel sealing gel is rated to 90°C continuous temperature and is halogen-free with an unlimited shelf life.

The RayGel Plus joint series is yet another of TE Connectivity's field-proven PowerGel filled products for the demanding requirements of the electrical power industry.

The RayGel Plus joint series is the latest development of our existing field-proven RayGel joints which have been available in the market for many years.

With "Plus" version, electrical installers now have the full range of branching capabilities from 2 x 1.5 mm² up to 5 x 16 mm². It is easier than ever to install cable connections for underground, direct buried, and overhead applications.

Application range

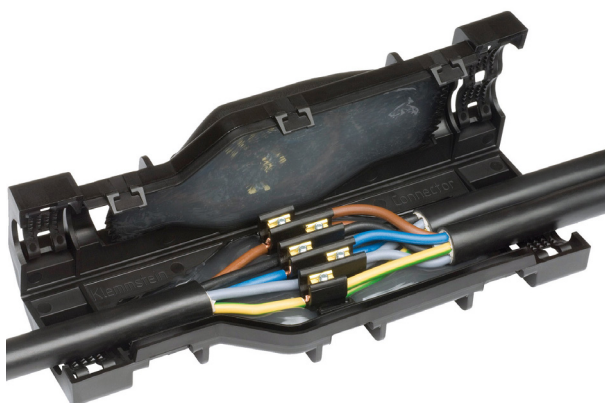
Five sizes for straight and branch joints are available, ranging from 10 up to 50 mm² single core- and multi-core cables from 1.5 up to 16 mm². For details see Selection Table.

Enclosure Design

The halogen-free poly-propylene enclosure is designed to house straight and branch connections in one solution only. This helps to minimize the required stock level and serves a wide range of applications. RayGel Plus joints can be snap-closed by hand due to its flexible wave-like gel barriers. A strain relief is integrated within the enclosure and quickly installed with two cable ties. All joints fulfil the requirement of ingress protection class IP68.

Performance tests

RayGel Plus joints are qualified to CENELEC EN 50393, the European specification for buried applications. This includes a three weeks heatcycling test with the joint immersed in one metre depth of water.



RayGel Plus 2 joint with connector installed



RayGel Plus 2/3 kit content

Easy to install

Closing the rugged RayGel Plus enclosure is literally a snap. Its short length also allows installation in cramped locations. No special tools needed, no rip cords to break, and no trimming, mixing, pouring, or heating required; RayGel Plus joints can be put into service immediately.

Kit content

PowerGel filled enclosure, universal connector block including sliding nut insertion tool and allen key (for RayGel Plus 2/3 joints), tie wraps for a strain relief of the cables and illustrated installation instructions. All joints are available in one piece packaging.



Universal connector block



CB5 connector block



Terminal strips and push-wire connectors

Universal connector block for RayGel Plus 2/3 joints

With the unique universal connector block installation is very straightforward, as the block snaps into the bottom side of the enclosure.

A supplementary tool helps to insert the sliding nuts and holds them in place until the connection is finalised.




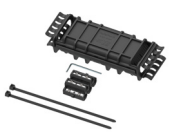


Connector block CB5 for RayGel Plus 1.5 joints

This very compact connector solution can be used for straight connections, where space in installation is limited.

Connector recommendation for RayGel Plus 0/1/1.5

All types which dimensionally fit into the enclosure, such as terminal strips, push-wire connectors, mechanical blocks and crimp connectors.

Selection Table

Product	Order Number	Application Range (mm ²)		Dimensions (mm) L x W x H	Connector Size max. (mm) L x W x H	Kit Content
		Main Cable	Branch Cable			
Without Connector						
RayGel Plus 0	CH6879-000	2-3 x 1,5-2,5 (1 x 10-50)	2-3 x 1,5 (1x 10-16)	100 x 37 x 24	26 x 24 x 16	
RayGel Plus 1	CH6880-000	3-5 x 1,5-2,5 (1 x 10-50)	3-5 x 1,5 (1 x 10-16)	139 x 51 x 24	26 x 38 x 16	
RayGel Plus 1.5	EH9930-000	4-5 x 2,5-16	-	180 x 63 x 39	55 x 45 x 24	
RayGel Plus 1.5 D*	EH9931-000	4 x 2,5-16	-	180 x 63 x 39	55 x 15 x 12	
Including Connector Block						
RayGel Plus 1.5 CB5	EH9932-000	4-5 x 2,5-16	-	180 x 63 x 39	included	
RayGel Plus 2	CH6881-000	3-5 x 1,5-6	3-5 x 1,5-6	233 x 78 x 40	included	
RayGel Plus 3	CH6882-000	3-5 x 6-16	3-5 x 6-16	313 x 90 x 47	included	

* Joint including divider for 4-core cables

te.com/energy

© 2016 TE Connectivity Ltd. family of companies. All Rights Reserved. EPP-1917-5/16

RayGel Plus, TE, TE Connectivity and TE connectivity (logo) are trademarks. Other logos, product and/or company names might be trademarks of their respective owners. While TE has made every reasonable effort to ensure the accuracy of the information in this brochure, TE does not guarantee that it is error-free, nor does TE make any other representation, warranty or guarantee that the information is accurate, correct, reliable or current. TE reserves the right to make any adjustments to the information contained herein at any time without notice. TE expressly disclaims all implied warranties regarding the information contained herein, including, but not limited to, any implied warranties of merchantability or fitness for a particular purpose. The dimensions in this catalog are for reference purposes only and are subject to change without notice. Specifications are subject to change without notice. Consult TE for the latest dimensions and design specifications.

FOR MORE INFORMATION: TE Technical Support Centers

France:	+ 33 380 583 200
UK:	+ 44 0870 870 70500
Germany:	+ 49 896 089 903
Spain:	+ 34 916 630 400
Italy:	+ 39 333 2500 915
Benelux:	+ 32 16 351 731
USA:	+ 1 800 327 6996
Canada:	+ 1 (905) 475-6222
Mexico:	+ 52 (0) 55-1106-0800
Latin/S. America:	+ 54 (0) 11-4733-2200
China:	+ 86 (0) 400-820-6015