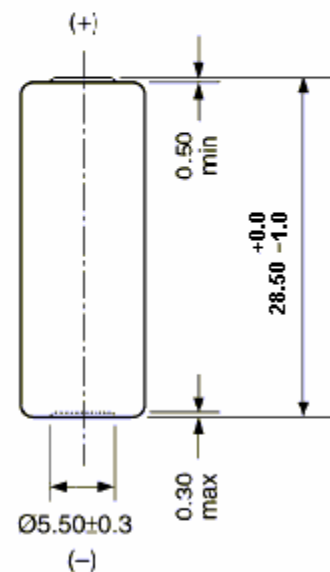
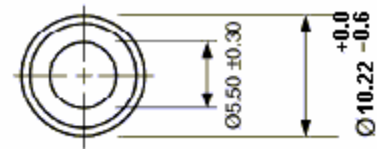


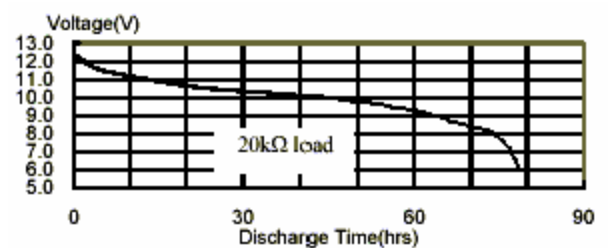
Model No.: **GP23AF**

|                              |   |
|------------------------------|---|
| <b>Description</b>           | : Mercury Free & Lead Free<br>Alkaline High Voltage Multicell   |
| <b>Nominal Voltage</b>       | : 12Volts   |
| <b>Nominal Dimensions</b>    | : Ø10.22mm×28.5mm   |
| <b>Terminal</b>              | : Nickel plated flat contacts - protruded<br>red(+); recessed black (-)                                       |
| <b>Jacket</b>                | : Metal jacket  |
| <b>Internal Connection</b>   | : Pressure  |
| <b>Applications</b>          | : Remote controller   |
| <b>Average Weight</b>        | : 7.5g  |
| <b>Date Code</b>             | : Unless otherwise specified, each<br>batteries will carry a numeric year<br>code and analogue month code (+) |
| <b>Shelf Life</b>            | : Not less than 90% of the service<br>capacity within first year storage<br>at 20 ± 2 °C 55 ± 20 %RH          |
| <b>Insulation</b>            | : 5MΩ min.  |
| <b>Resistance</b>            |   |
| <b>Close Circuit Voltage</b> | : 9.5 Volts (min.)(load resistor 800Ω<br>at 20 ± 2 °C for 0.1 to 2 seconds)                                   |
| <b>Current Drain</b>         | : Under 15mA pulse, 0.5mA<br>continuous   |
| <b>Nominal Service Life</b>  | : 74hrs (at 20kΩ load)<br>(to 6.0V at 20 ± 2 °C)  |
| <b>Average Service</b>       | : 38mAh(at 20kΩ load)   |
| <b>Capacity</b>              |   |
|                              | (to 6.0V at 20 ± 2 °C)  |



Unit : mm

Typical Discharge characteristics at 20 ± 2 °C



The information (subject to change without prior notice) contained in this document is for reference only and should not be used as a basis for product guarantee or warranty. For applications other than those described here, please consult your nearest GP Sales and Marketing Office or Distributors.