

Artikel-Nr. 072508/O

Bez.: Platinen-Steckverbinder, hochw. Ausf., gerade Ausf., Kabel/Länge AWG 24-25 cm, Oberteil
Buchsenleiste mit Kabel, 10-polig, mit Verriegelung

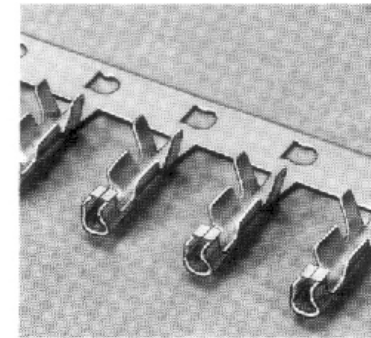
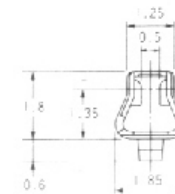
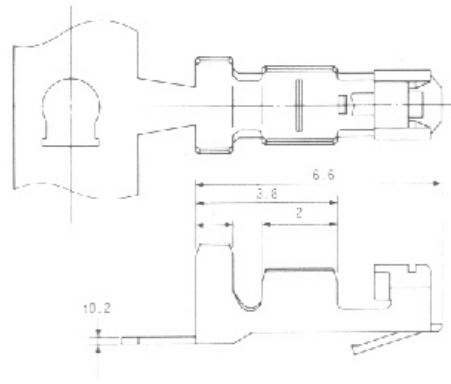
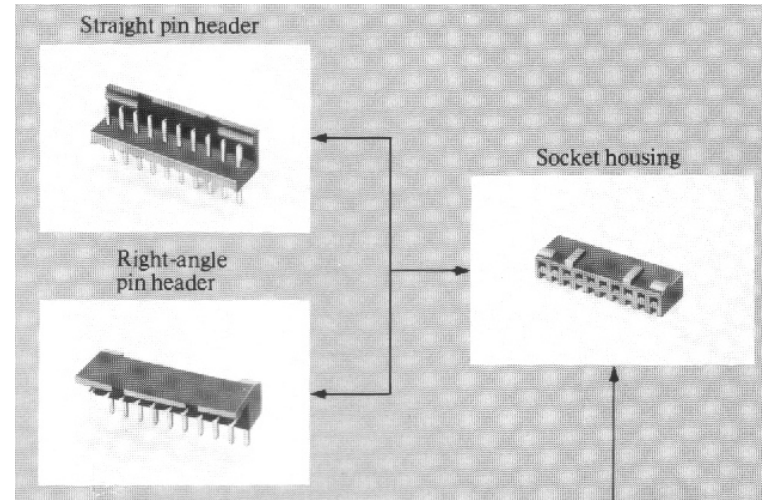
- Very low profile — total mated height: 10mm
- Newly designed, highly reliable socket contact
- 14 sizes, from 2 to 15 contact layouts
- Straight/Right angle pin headers & sockets

● **MATERIALS & FINISHES**

Insulator: 66 Nylon,
UL94V-0 light brown
Pin contact: Brass,
Tin over nickel plated

● **STANDARD DATA**

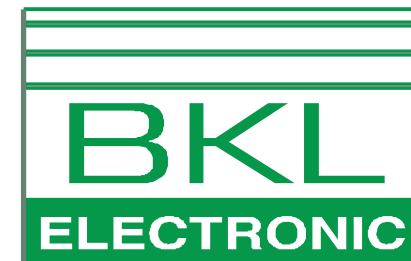
Current rating: 3 Amp.
Dielectric withstanding voltage: 1500 VAC r.m.s.
Insulation resistance: 100 M Ω min.
Contact resistance: 20 m Ω max.
Contact retention: 1 kg min.
Total mating force: $(350 \times n + 1500)$ g max.
Total unmating force: $(200 \times n + 1500)$ g min.
Operating temperature: -40°C thru $+85^{\circ}\text{C}$
Applicable PCB: 1.6 thru 2.6 mm thick
Applicable wire size: AWG #22 thru #28
(n=Number of contacts)



www.bkl-electronic.de

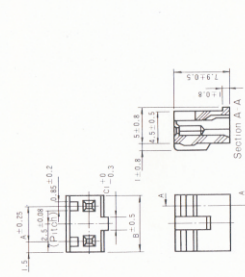
Technische Änderungen vorbehalten. Ausführungen können variieren. Sollten Sie ein Muster benötigen kontaktieren Sie uns bitte.

BKL-ELECTRONIC Kreimendahl GmbH • Märkenstück 14 • 58509 Lüdenscheid
Tel: +49 (0)2351-3621-0 • Fax: +49 (0)2351-3621-29 • info@bkl-electronic.de

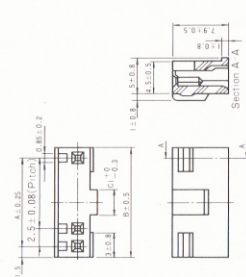


SOCKET HOUSING

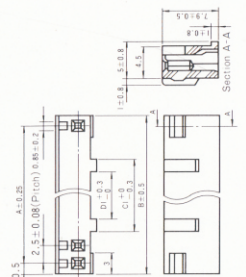
• 2, 3 contact



• 4~6 contact

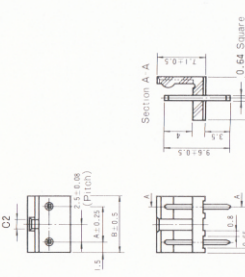


• 7~15 contact

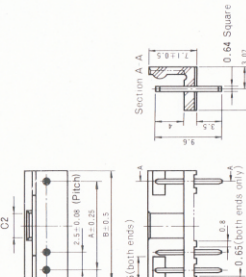


STRAIGHT PIN HEADER

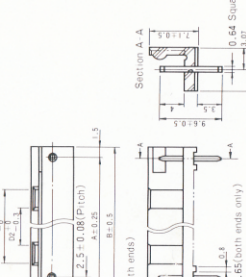
• 2, 3 contact



• 4~6 contact

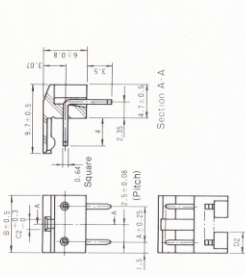


• 7~15 contact

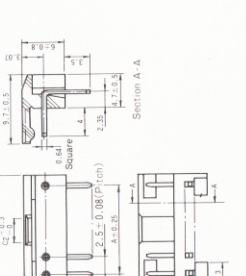


ANGLE PIN HEADER

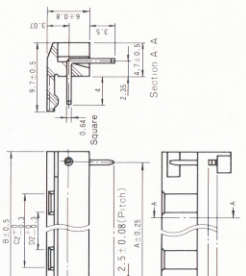
• 2, 3 contact



• 4~6 contact



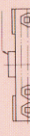
• 7~15 contact



(Conguration of 13, 14 & 15-contact layouts are slightly different)

No. of contacts	A±0.25	B±0.5	C1±0.3	C2±0.3	D1±0.3	D2±0.3	Terminal No. on housing
2	2.5	5.5	1.4	1.5	1.5	1.7	1
3	5	8	1.9	2	—	—	1
4	7.5	10.5	2.4	2.5	—	—	1
5	10	13	2.9	3	—	—	1, 5
6	12.5	15.5	3.4	3.5	—	—	1, 5, 6
7	15	18	3.9	4	2.5	2.4	1, 5, 6
8	17.5	20.5	4.4	4.5	3	2.4	1, 5, 6, 8
9	20	23	4.9	5	3.5	2.4	1, 5, 6, 8
10	22.5	25.5	5.4	5.5	4	2.4	1, 5, 6, 8, 10
11	25	28	5.9	6	4.5	2.4	1, 5, 6, 8, 10
12	27.5	30.5	6.4	6.5	5	2.4	1, 5, 6, 8, 10, 12
13	30	33	6.9	7	5.5	2.4	1, 5, 6, 8, 10, 12
14	32.5	35.5	7.4	7.5	6	2.4	1, 5, 6, 8, 10, 12
15	35	38	7.9	8	6.5	2.4	1, 5, 6, 8, 10, 12, 15

* Terminal No. on housing (viewed from contact insertion side)



* PCB Mounting hole (PCB thickness: 1.6~2.6mm)



INSTALLATION

Right-angle pin header must be installed on an edge of the board as shown below:

