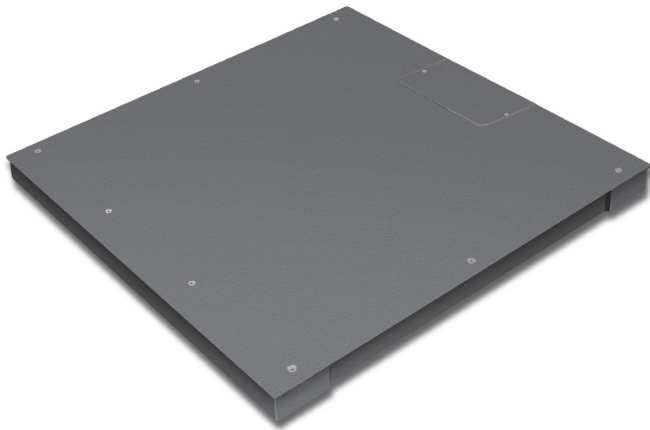


KERN KXP 3000V20M

Wägebrücke aus rutschfestem Stahl-Riffelblech, lackiert mit IP67



Construction

Cable length:	5 m
Dimensions of weighing plate (WxDxH):	1500 x 1250 x 80 mm
Material weighing plate:	Steel lacquered
Revolving screw feet:	yes
Weighing surface (WxD):	1500 x 1250 mm

Measuring system

Readout [d]:	1 kg
Resolution (non verifiable):	3000
Weighing range [Max]:	3 t

Technical data about verification

Minimum load [Min]:	1 kg
Periodic Verification for Italy:	969-112
Verification by KERN possible:	yes
Verification class:	III
Verification value [e]:	1 kg

Environmental conditions

Maximum operating temperature:	40 °C
Minimum ambient temperature:	-10 °C

Service

Adjustment at the location of installation:	961-252
DAkkS Certificate:	963-132
Verification:	965-232

Category

Brand:	KERN
Category:	Platforms
Product Group:	Weighing bridge

Packaging & shipping

Delivery:	48 h
Dimensions packaging (WxDxH):	1530 x 1300 x 335 mm
Gross weight:	173 kg
Net weight:	144 kg
Shipping method:	Freight forwarder