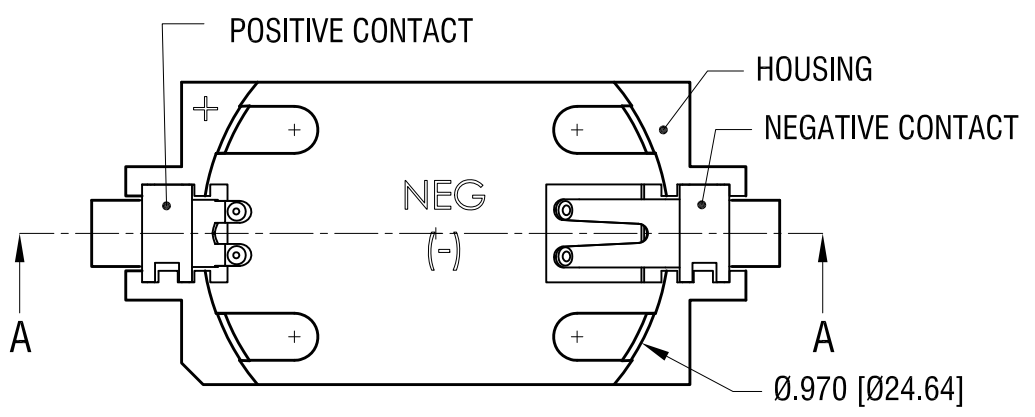
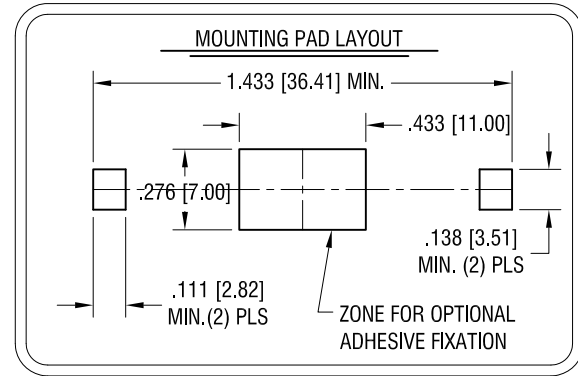
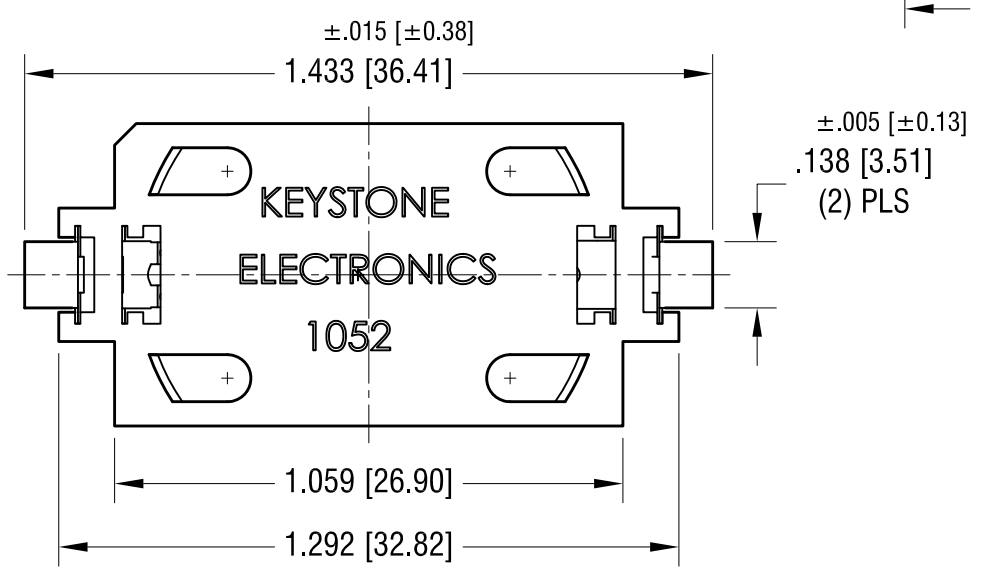
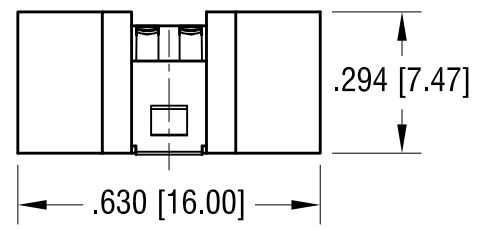
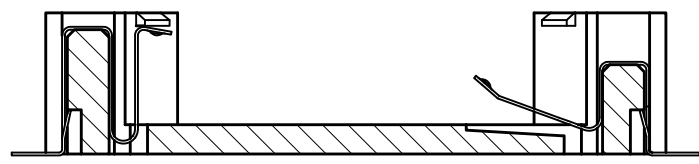


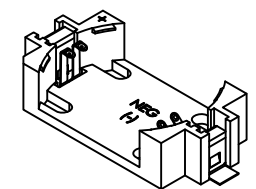
DATE	DESCRIPTION	REV.
8.12.11	CHANGE AS PER ECN 11-104	A
7.24.14	CHANGE AS PER ECN 14-077	B



SECTION A-A



- NOTES:
- BASE:  
MAT'L - GLASS FILLED LCP UL 94V-0
  - CONTACTS:  
MAT'L - .006 [0.15] TH'K PHOSPHOR BRONZE  
FINISH: GOLD FLASH PLATING



ACTUAL SIZE

THIS DOCUMENT IS THE PROPERTY OF KEYSTONE ELECTRONICS CORP. AND SHALL NOT BE REPRODUCED, DISTRIBUTED OR USED AS A BASIS FOR MANUFACTURE WITHOUT PRIOR WRITTEN PERMISSION FROM KEYSTONE ELECTRONICS CORP.

<b>KEYSTONE ELECTRONICS CORP.</b>			
www.keyelco.com • ASTORIA, N.Y. 11105-2017 • Tel (718) 956-8900			
PART NAME 2450 SMT BATTERY HOLDER			
MATERIAL AS NOTED			
FINISH AS NOTED	DRN BY NT	DATE 12.01.10	
	APPD LN	SCALE 2.5X	
TOLERANCES INCH [MM] DECIMAL ±.010 [±0.25] ANGULAR ± 1° UNLESS OTHERWISE SPECIFIED	CODE C	DWG NO. 1052	