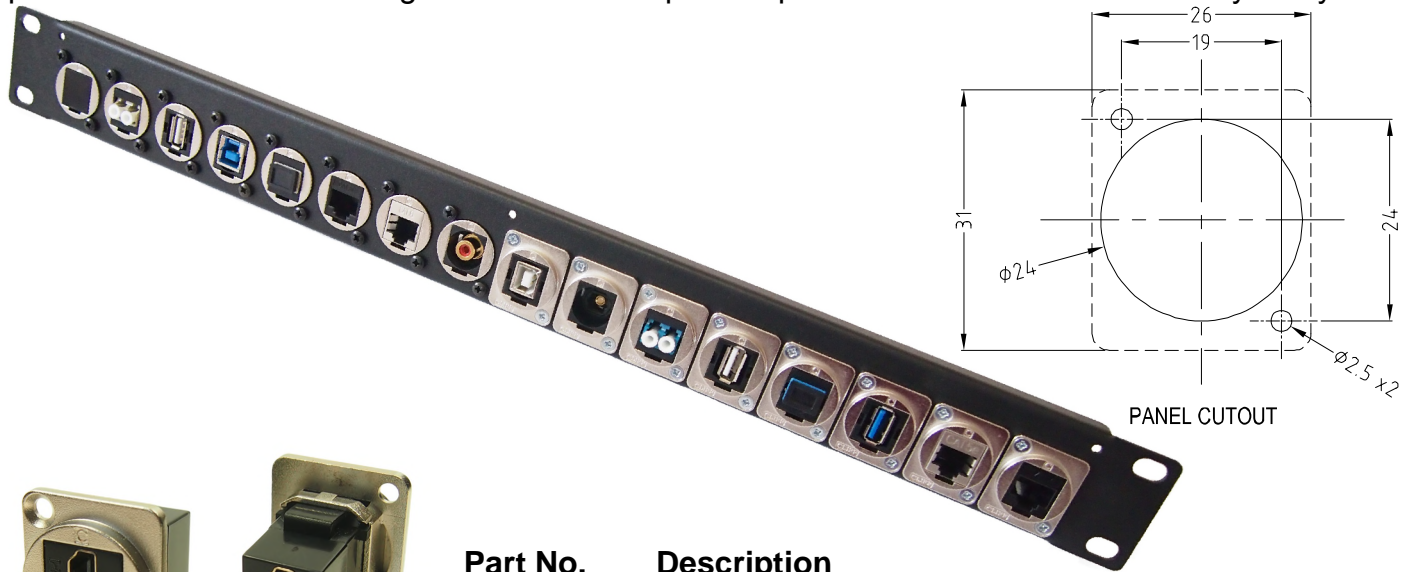


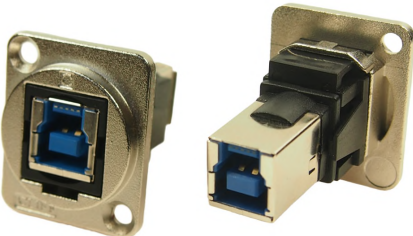
# CLIFF

## METAL FEEDTHROUGH CONNECTORS FT Series

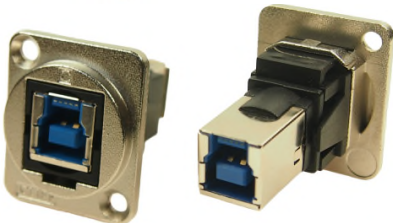
The Metal FT Series of true feed through connectors are perfect for developing custom I/O configurations for wall-plates, rack panels, etc. ALL fit within a standard XLR panel cutout, and use common cabling for front and back connections. No soldering, no punch terminations, just use the standard cable for that particular connector style. Mount from the front or back, low rear profile accommodates the tightest “behind the panel” spaces. Available in a wide variety of styles.



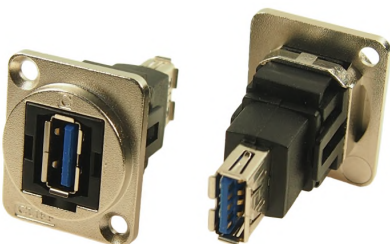
**Part No.**      **Description**  
**CP30200GM** HDMI A Female to HDMI A, Gold Plated, CSK hole.



**Part No.**      **Description**  
**CP30203NM** USB 2.0 B to USB 2.0 B, Nickel Plated, CSK hole.



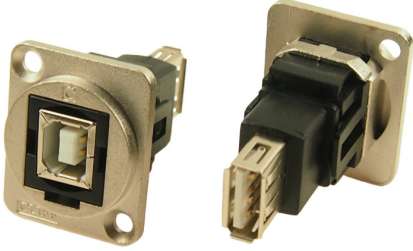
**Part No.**      **Description**  
**CP30204NM** USB 3.0 B to USB 3.0 B, Nickel Plated, CSK hole.



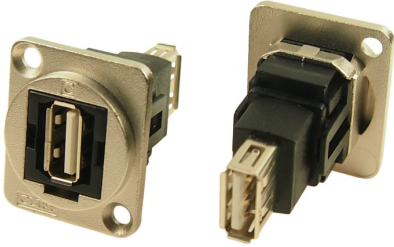
**Part No.**      **Description**  
**CP30205NM** USB 3.0 A to USB 3.0 A, Nickel Plated, CSK hole.



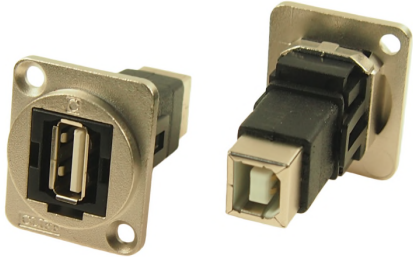
**Part No.**      **Description**  
**CP30206NM** USB 3.0 B to USB 3.0 A, Nickel Plated, CSK hole.



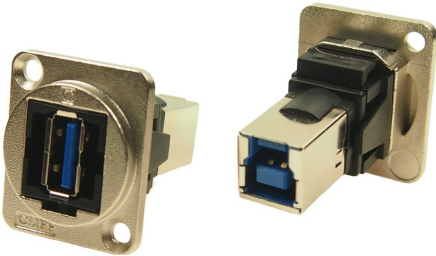
**Part No.**      **Description**  
**CP30207NM** USB 2.0 B to USB 2.0 A, Nickel Plated, CSK hole.



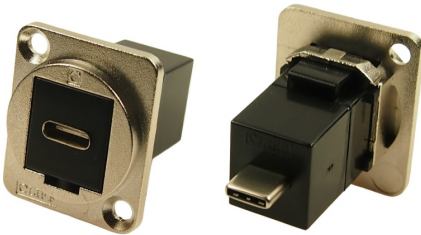
**Part No.**      **Description**  
**CP30208NM** USB 2.0 A to USB 2.0 A, Nickel Plated, CSK hole.



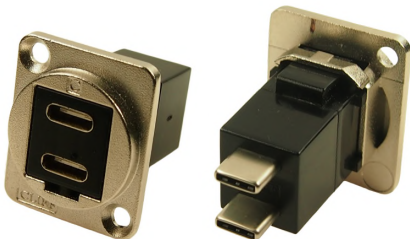
**Part No.**      **Description**  
**CP30209NM** USB 2.0 A to USB 2.0 B, Nickel Plated, CSK hole.



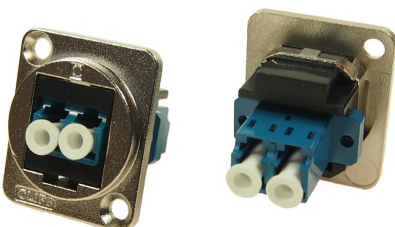
**Part No.**      **Description**  
**CP30210NM** USB 3.0 A to USB 3.0 B, Nickel Plated, CSK hole.



**Part No.**      **Description**  
**CP30211M** USB C Female to Male, Nickel Plated, CSK hole.



**Part No.**      **Description**  
**CP30212M** Dual USB C Female to Male, Nickel Plated, CSK hole.



**Part No.**      **Description**  
**CP30213M** LC Duplex SM adaptor, Nickel Plated, CSK Hole



**Part No.** **Description**  
**CP30214M** LC Duplex MM, Nickel Plated, CSK Hole



**Part No.** **Description**  
**CP30215M** SC Simplex SM, Nickel Plated, CSK Hole



**Part No.** **Description**  
**CP30216M** SC Simplex MM, Nickel Plated, CSK Hole



**Part No.** **Description**  
**CP30217M** Toslink, CSK Hole



**Part No.** **Description**  
**CP30220M** UTP Cat5e RJ45-RJ45, CSK Hole



**Part No.** **Description**  
**CP30220SM** FTP Cat5e RJ45-RJ45, Shielded, CSK Hole

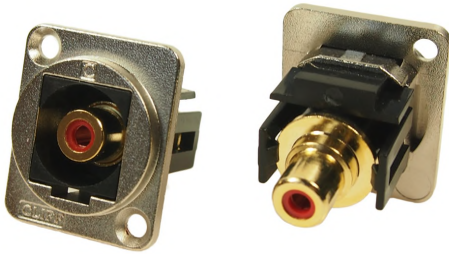


**Part No.** **Description**  
**CP30222M** UTP Cat6 RJ45-RJ45, CSK Hole

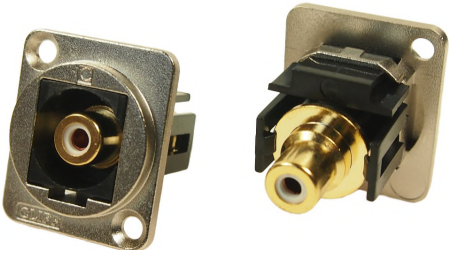


**Part No.** **Description**  
**CP30222SM** FTP Cat6 RJ45-RJ45, Shielded, CSK Hole

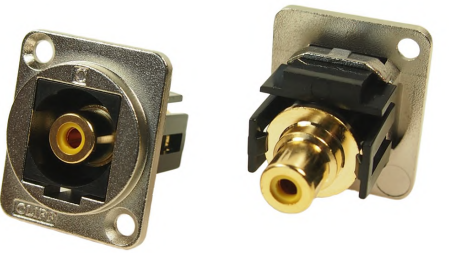




**Part No.**  
**CP30230M**      **Description**  
RCA Phono RED, CSK Hole

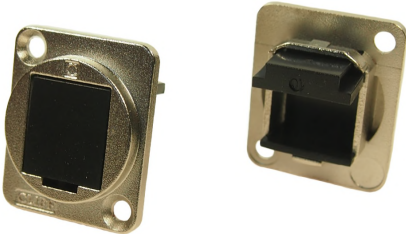


**Part No.**  
**CP30231M**      **Description**  
RCA Phono WHITE, CSK Hole



**Part No.**  
**CP30232M**      **Description**  
RCA Phono YELLOW, CSK Hole

Other colours available on request.



**Part No.**  
**CP30241M**      **Description**  
Blanking Plate, CSK Hole



**Part No.**  
**CP30110**      **Description**  
XLR USB A Female to USB B Female, CSK Hole



**Part No.**  
**CP30111**      **Description**  
XLR USB B Female to USB A Female, CSK Hole



**Part No.**  
**CP30116**      **Description**  
XLR HDMI A-A, CSK Hole

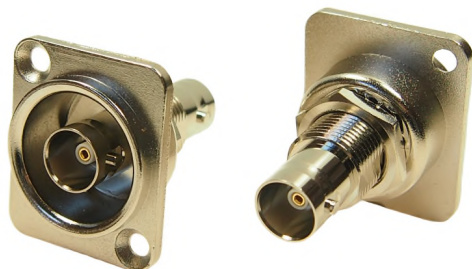


**Part No.**  
**CP30117**      **Description**  
XLR Firewire, CSK Hole



**Part No.**  
**CP30118**

**Description**  
XLR 50 OHM BNC, CSK Hole



**Part No.**  
**CP30119**

**Description**  
XLR 75 OHM BNC, CSK Hole



**Part No.**  
**CP30112**

**Description**  
Cover for models CP30110, CP30111, CP30116,  
CP30117 only.

For further information, contact [sales@cliffuk.co.uk](mailto:sales@cliffuk.co.uk)

**Cliff Electronic Components Limited**

76 Holmethorpe Avenue, Holmethorpe Ind. Estate,  
Redhill, Surrey RH1 2PF U.K.

Tel: +44 (0)1737 771375 Fax: +44 (0)1737 766012



Visit us online at:



[www.cliffuk.co.uk](http://www.cliffuk.co.uk)