

Interface module - VIP-3/PT/D25SUB/F - 2903782

Please be informed that the data shown in this PDF Document is generated from our Online Catalog. Please find the complete data in the user's documentation. Our General Terms of Use for Downloads are valid (<http://download.phoenixcontact.com>)



VARIOFACE module, with push-in connections and female D-SUB miniature pin strip, for mounting on NS 35 rails, 25-pos.

The figure shows the 37-pos. version with D-SUB plug.

Key commercial data

package_quantity	1
GTIN	4046356796576

Technical data

Dimensions

Width	57.1 mm
Height	75.8 mm
Depth	63 mm

Ambient conditions

Ambient temperature (operation)	-20 °C ... 50 °C
Ambient temperature (storage/transport)	-20 °C ... 70 °C

General

Max. perm. operating voltage	25 V AC
Max. perm. operating voltage	60 V DC
Max. perm. current (per branch)	2 A
Number of positions	25
Status display	No
Mounting position	any

Connection data for connection 1

Connection name	Field level
Connection method	Push-in connection
Stripping length	8 mm
Conductor cross section solid	0.14 mm ² ... 2.5 mm ²
Conductor cross section flexible	0.14 mm ² ... 2.5 mm ²
Conductor cross section AWG	26 ... 14

Connection data for connection 2

Connection name	Controller level
-----------------	------------------

Interface module - VIP-3/PT/D25SUB/F - 2903782

Technical data

Connection data for connection 2

Connection method	D-SUB socket strip
Number of connections	1
Number of positions	25

Supported controller

Controller	ABB S800 I/O
- suitable I/O card	DI810
- suitable I/O card	DI811
- suitable I/O card	DI814
- suitable I/O card	DI818
- suitable I/O card	DI830
- suitable I/O card	DI831
- suitable I/O card	DI840
- suitable I/O card	DI885
- suitable I/O card	DO810
- suitable I/O card	DO814
- suitable I/O card	DO818
- suitable I/O card	DO840
- suitable I/O card	DP820
- suitable I/O card	AI810
- suitable I/O card	AI815
- suitable I/O card	AI820
- suitable I/O card	AI830
- suitable I/O card	AI835
- suitable I/O card	AI845
- suitable I/O card	AO810
- suitable I/O card	AO815
- suitable I/O card	AO820
- suitable I/O card	AO845

Standards and Regulations

Connection in acc. with standard	CSA
Standards/regulations	IEC 60664
Standards/regulations	DIN EN 50178
Rated surge voltage	1.2 kV
Degree of pollution	2
Overvoltage category	II

Classifications

eCl@ss

eCl@ss 4.0	27250313
eCl@ss 4.1	27250313

Interface module - VIP-3/PT/D25SUB/F - 2903782

Classifications

eCl@ss

eCl@ss 5.0	27250313
eCl@ss 5.1	27250313
eCl@ss 7.0	27141152
eCl@ss 8.0	27141152
eCl@ss 9.0	27141152

ETIM

ETIM 4.0	EC002780
ETIM 5.0	EC002780
ETIM 6.0	EC002780

UNSPSC

UNSPSC 6.01	30211824
UNSPSC 7.0901	39121421
UNSPSC 11	39121421
UNSPSC 12.01	39121421
UNSPSC 13.2	39121432

Approvals

CSA / UL Recognized / cUL Recognized / EAC / EAC / cULus Recognized /

Approval details

CSA ®	
Nominal voltage UN	105 V
Nominal current IN	2 A
mm ² /AWG/kcmil	26-14

UL Recognized ⚡	
Nominal voltage UN	125 V
Nominal current IN	2 A
mm ² /AWG/kcmil	26-14

cUL Recognized ⚡	
Nominal voltage UN	125 V
Nominal current IN	2 A
mm ² /AWG/kcmil	26-14

Interface module - VIP-3/PT/D25SUB/F - 2903782

Approvals

EAC EAC

ERC

cULus Recognized 

Accessories

System cable

CABLE-D25SUB/B/S/ 50/KONFEK/S - 2302120



CABLE-D25SUB/B/S/100/KONFEK/S - 2302133



CABLE-D25SUB/B/S/150/KONFEK/S - 2302146



CABLE-D25SUB/B/S/200/KONFEK/S - 2302159



Interface module - VIP-3/PT/D25SUB/F - 2903782

Accessories

CABLE-D25SUB/B/S/300/KONFEK/S - 2302162



CABLE-D25SUB/B/S/400/KONFEK/S - 2302175



CABLE-D25SUB/B/S/600/KONFEK/S - 2302188



CABLE D-SUB-S/.../.../... - 2302340



CABLE-D25SUB/S/S/100/KONFEK/S - 2305635



CABLE-D25SUB/S/S/200/KONFEK/S - 2305648



Interface module - VIP-3/PT/D25SUB/F - 2903782

Accessories

CABLE-D25SUB/S/S/300/KONFEK/S - 2305651



CABLE D-SUB-S-S-S/.../.../... - 2302434



CABLE D-SUB-B-B-S/.../.../... - 2302421



Terminal marking

UC-TM 4 - 0818111



UC-TM 6 - 0818085



Interface module - VIP-3/PT/D25SUB/F - 2903782

Accessories

ZB 5,08:UNBEDRUCKT - 0809793



ZB 22:UNBEDRUCKT - 0811862



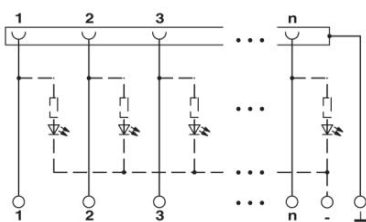
Printing system

BLUEMARK X1 - 5147777



Drawings

Circuit diagram



Phoenix Contact 2016 © - all rights reserved
<http://www.phoenixcontact.com>