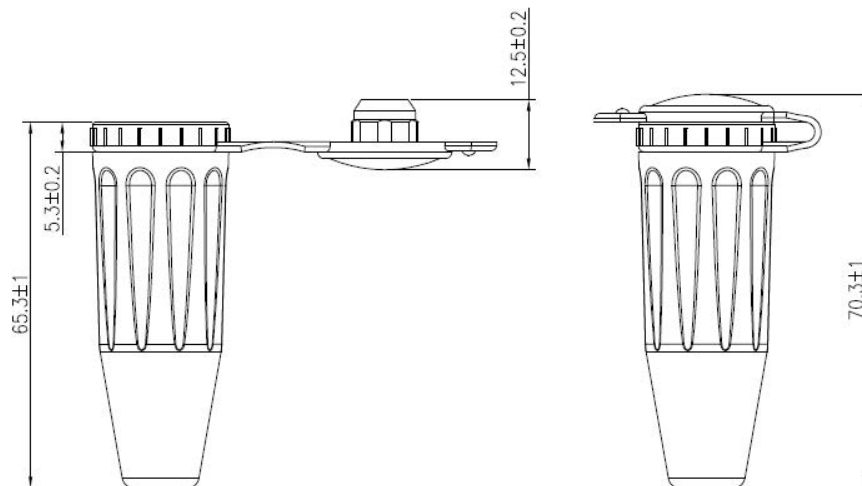
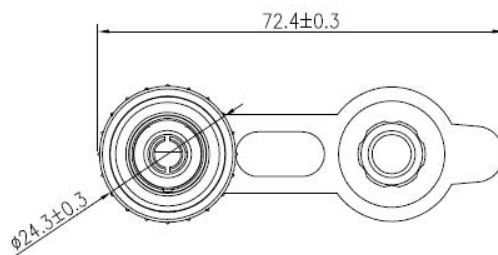


Outlet socket with protective cap

Rating	12V DC 20A MAX
Insulation Resistance	DC 500V 100M ohm Min.
Dielectric Strength	AC 1500V 1 Second
Operation Temperature	0~+70°C



Unit: mm

Material:

Housing: PBT+15%GF, Black

Handle: PVC 30%, Black

Dust proof cover: PVC 45%, Black

This is a publication by Conrad Electronic SE, Klaus-Conrad-Str. 1, D-92240 Hirschau (www.conrad.com).

All rights including translation reserved. Reproduction by any method, e.g. photocopy, microfilming, or the capture in electronic data processing systems require the prior written approval by the editor. Reprinting, also in part, is prohibited. This publication represents the technical status at the time of printing.

© Copyright 2017 by Conrad Electronic SE.