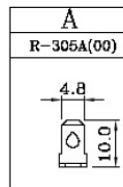
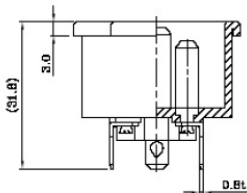
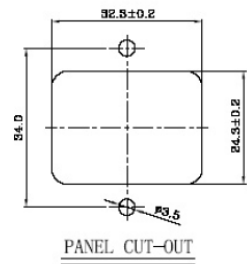
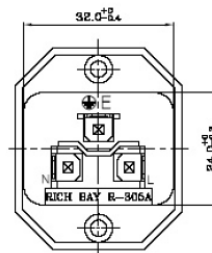
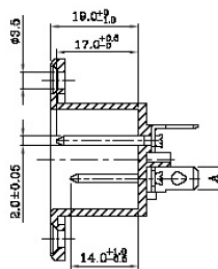
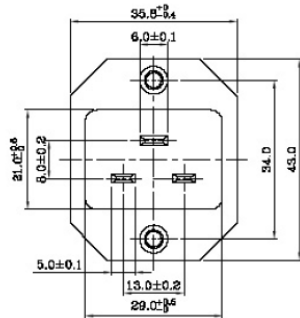

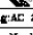

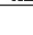


Data Sheet

IEC Connector Plug



SPECIFICATION:
 1. Insulation Resistance: Over 100MΩ at 500V DC.
 2. Dielectric strength: 2000V AC 1 Minute.
 3. Body Material: Thermoplastic 94V-2~V-0.

Rating: AC 16A 250V	
Mark	Safety Regulation
	VDE
	ENEC
Rating: AC 20A 250V	
Mark	Safety Regulation
	UL
	CUL

✦

Data Sheet

Technical data

Content	1 pc(s)
Total number of pins	2 + PE
Colour	Black
Leading contact (PE)	Yes
Connection	Type C CEE 7/16 plug 4.8 mm
Plug standard (IEC 60320)	C20
Nominal current	16 A
Nominal voltage	250 V
Number of pins	2
Connector type	Plug, vertical mount
Mounting type	Screw
Fitting type (details)	Flange
RoHS-compliant	Yes