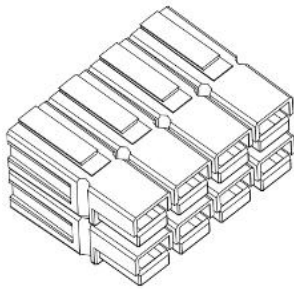
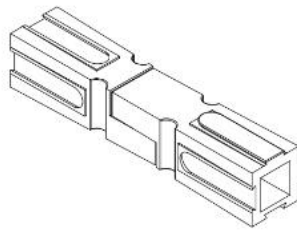
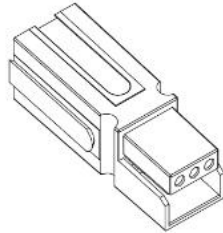


Datasheet

Item no. 1571624 1571086 1571626 1570616
 1571627 1571087

V1_08292018_01_en

120Amp Single pole power connector



- Features
- Flat wiping contact system
Minimal contact resistance at high current, wiping action cleans Contact surface during connection/disconnection
- Interface is color-coded voltage
To prevent the erroneous insertion of the housing in different voltage
- Integrated housing
Durable structure
- No male and female design in
Can be quickly assembled to reduce component library
- Flexible application
While meeting the board-wire, wire line connection

Rated Current(Ampere):	120A
Rated Voltage(Voltage) :	600V
Contact Barrel Wire Size(AWG) :	2/4/6AWG (13.3mm ² -21.1/33.6mm ²)
Average Contact Resistance :	0.05MΩ
Voltage Proof :	2200V(DC)
Insulation Resistance :	500MΩ
A. No Load (Contact/Disconnect Cycles)	To10,000
B. Under Load (Hot Plug 250 Cycles@120V)	60A
Average Unmating Force :	85N
Flammability Rating of Housing Material :	UL94 V-0
Operating Temperature Range :	-20°to 105°
Contact Material :	Copper\Plating Silver

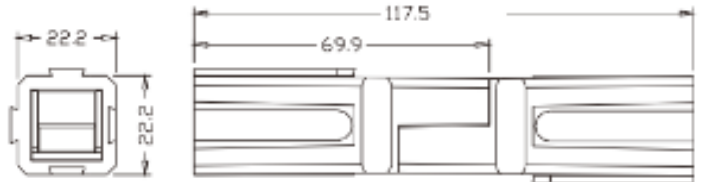
Datasheet

Item no. 1571624 1571086 1571626 1570616
 1571627 1571087

V1_08292018_01_en

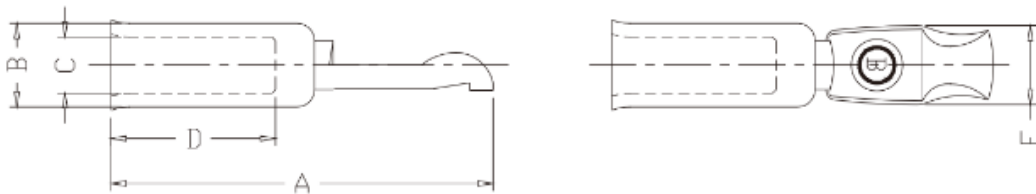
Housings

Item No.	Color	Voltage
1571624	Blue	48V
1571086	Green	72V
1571626	Black	80V



Terminal

Item No.	A (mm)	B (mm)	C (mm)	D (mm)	E (mm)	Wire(AWG\mm ²)
1570616	50.8	11.2	5.6	21.3	10.4	6AWG\33.6 mm ²
1571627	50.8	11.2	7.6	21.3	10.4	4AWG\33.6 mm ²
1571087	50.8	11.2	8.6	21.3	10.4	2AWG\33.6 mm ²



Temperature rise charts

