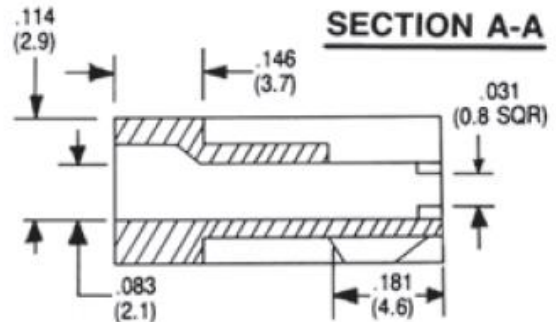
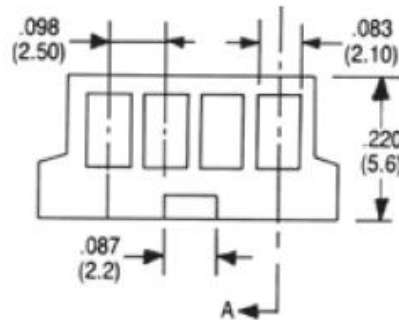
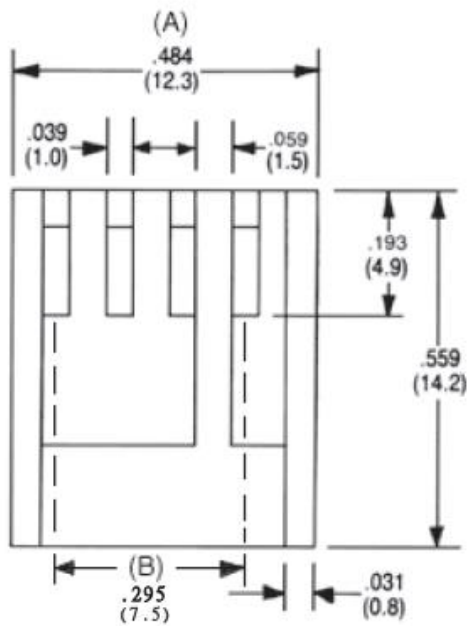
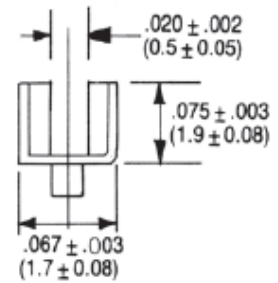
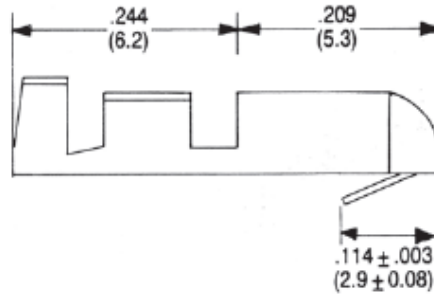
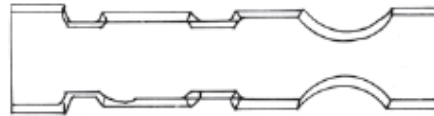


Data Sheet

PC power supply plug



Data Sheet

Technical data

SPECIFICATION

Poles	: 2 -12
Voltage rating	: 250VAC / VDC
Current rating	: 3 AMP AC / DC
Dielectric withstanding	: 1,000VAC for 1 min.
Insulation resistance	: 1,000 megohms min.
Temperature range	: -25°C to 85°C
Material	
Housing	: NYLON 66 UL 94V-2
Terminal	: Brass / tin plated
Tolerance	: ± 0.2