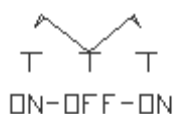
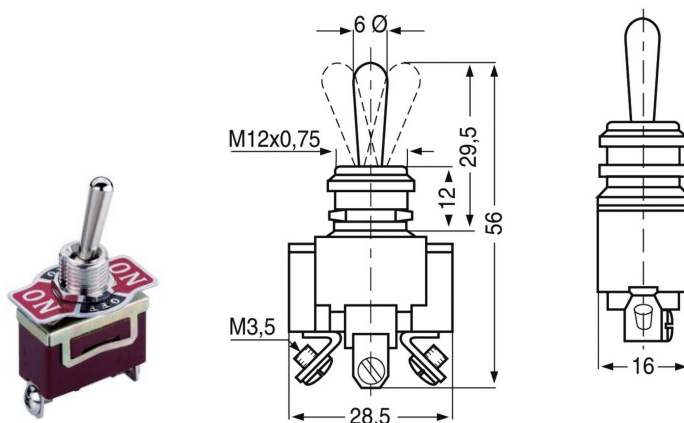
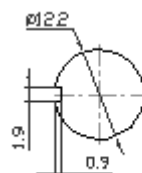


Toggle Switch, 15A/125V, 10A/250V



Mounting



Circuitry

Rating:	15A@125V AC; 10A@250V AC
Contact Resistance:	50mΩ max
Insulation Resistance:	500V DC 1000MΩ/ minute
Dielectric Strength:	1500V AC 1 minute
Operating Temperature:	-25°C to 85°C
Electrical Life:	10,000 Cycles