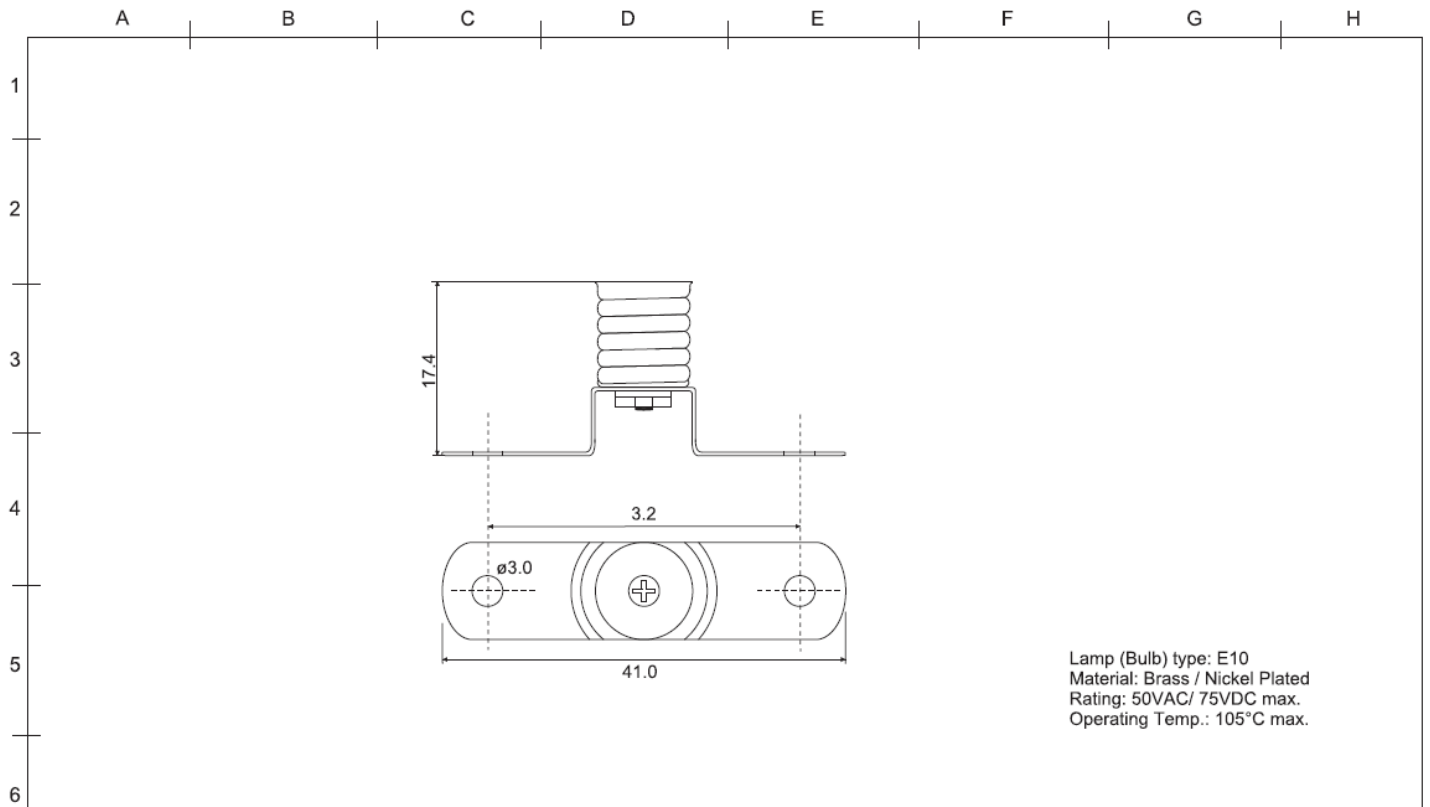


Datasheet

Item no. 1571076

V1_07302018_01_en

E10 bulb socket



Lamp (Bulb) type: E10
 Material: Brass / Nickel Plated
 Rating: 50VAC/ 75VDC max.
 Operating Temp.: 105°C max.

DATE	REVISION	APPROVAL BY	DIMENSION	mm ± 0.3	Model	E 10 B21
			DRAW BY		Name	E10 Lamp Holder
			APPROVAL BY			
			DATE	20-05-2013		