

# Datasheet

V1\_0917\_01\_en

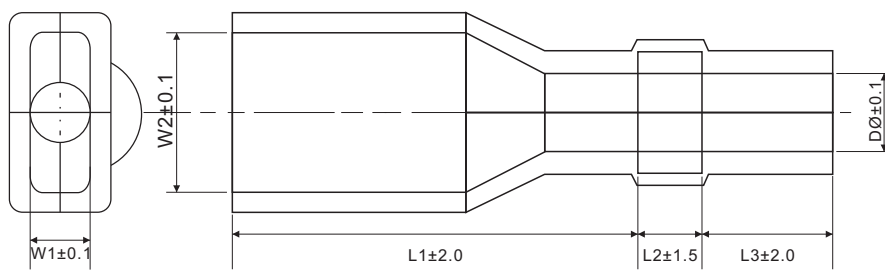
Item no. 1571999 / 1564997 / 1564416 / 1566424  
 1564996 / 1566428 / 1571998 / 1566427  
 1566426 / 1571996 / 1572001 / 1571995

## Insulation Protective Sleeve for Terminal Connector



### Specification

Material: PVC (Polyvinyl Chloride)  
 Material Thickness: 0.8mm  
 Insulation Color: see the table  
 Insulating resistance: 500 V/DC, >200Mohm  
 Dielectric withstand voltage: 1000V/min. (5mA)  
 Short-term high temperature: 105°C at 10min.  
 Working temperature: -20°C ~ 75°C  
 Flammability class: 94V-0



Best-Nr.	W1 (mm)	W2 (mm)	D (ømm)	L (mm)	L1 (mm)	L2 (mm)	L3 (mm)	Color
1571999	2.00	4.0	3.0	22.0	14.5	2.5	5.0	Transparent
1564997	2.00	4.0	3.0	22.0	14.5	2.5	5.0	Black
1564416	2.00	4.0	3.0	22.0	14.5	2.5	5.0	Red
1566424	2.00	4.0	3.0	22.0	14.5	2.5	5.0	Blue
1564996	2.30	5.8	3.0	22.5	14.5	2.8	5.0	Transparent
1566428	2.30	5.8	3.0	22.5	14.5	2.8	5.0	Black
1571998	2.30	5.8	3.0	22.5	14.5	2.8	5.0	Red
1566427	2.30	5.8	3.0	22.5	14.5	2.8	5.0	Blue
1566426	3.50	8.0	3.5	26.0	18.0	3.0	5.0	Transparent
1571996	3.50	8.0	3.5	26.0	18.0	3.0	5.0	Black
1572001	3.50	8.0	3.5	26.0	18.0	3.0	5.0	Red
1571995	3.50	8.0	3.5	26.0	18.0	3.0	5.0	Blue

This is a publication by Conrad Electronic SE, Klaus-Conrad-Str. 1, D-92240 Hirschau (www.conrad.com).

All rights including translation reserved. Reproduction by any method, e.g. photocopy, microfilming, or the capture in electronic data processing systems require the prior written approval by the editor. Reprinting, also in part, is prohibited. This data represent the technical status at the time of printing. Changes in technology and equipment reserved.