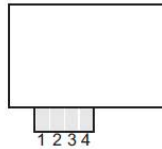
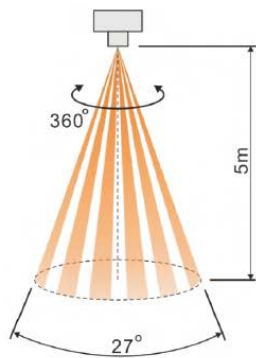


## IR Sensor, 5V DC

### IR Sensor Module

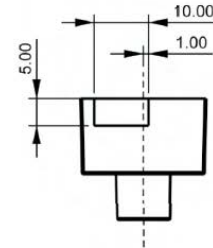
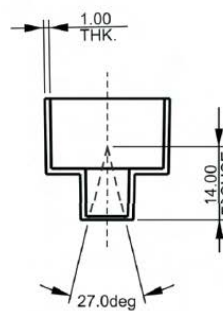
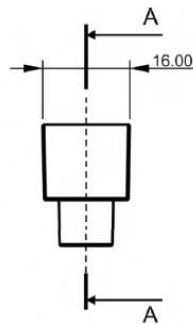
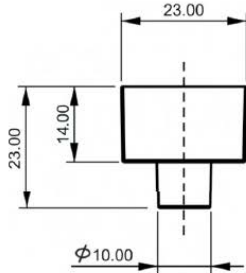


- 1 Output reference
- 2 Ground
- 3 Output
- 4 Input

### Model: A27/360



Angle: approx. 27° cone-shaped 360°  
 Range: approx. 5 m  
 Operating voltage: (UB) approx. 4 to 9VDC  
 Power consumption: (IE) approx. 1 Ma at UB = 5V  
 Output signal: (Uout) U signal + U REF.  
 Operating temperature: -20 °C to + 50 °C  
 Connection to the switch unit: Solder contacts  
 Dimensions (L x W xH): approx. 23 x 23 x 16 mm  
 Button head diameter: approx. 10 mm



Unit: mm