

Data Sheet

Infraded receiver module



Data Sheet

● Description

The OS-1838B is miniaturized infrared receivers for remote control and other applications requiring improved ambient light rejection.

The separate PIN diode and preamplifier IC are assembled on a single leadframe.

The epoxy package contains a special IR filter.

This module has excellent performance even in disturbed ambient light applications and provides protection against uncontrolled output pulses.

● Features

- Photo detector and preamplifier in one package .
- Internal filter for PCM frequency.
- Inner shield,good anti-interference ability.
- High immunity against ambient light.
- Improved shielding against electric field disturbance
- 3.0V or 5.0V supply voltage; low power consumption.
- TTL and CMOS compatibility.
- Suitable transmission code:NEC code,RC5 code.

● Applications:

1. Optical switch
2. Light detecting protion of remote contol
 - AV instruments such as Audio,TV,VCR,CD,MD,DVD,etc.
 - Home appliances such as Air-conditioner,Fan,etc.
 - CATV set top boxes
 - Multi-media Equipment

● Absolute Maximum Ratings($T_a=25^{\circ}\text{C}$)

Parameter	Symbol	Ratings	Unit	Notice
Supply Voltage	V_s	2.7-5.5	V	—
Operating Temperature	T_{opr}	-20~+65	$^{\circ}\text{C}$	—
Storage Temperature	T_{stg}	-40~+85	$^{\circ}\text{C}$	—
Soldering Temperature	T_{sd}	260	$^{\circ}\text{C}$	4mm from mold body less than 5 sec

Data Sheet

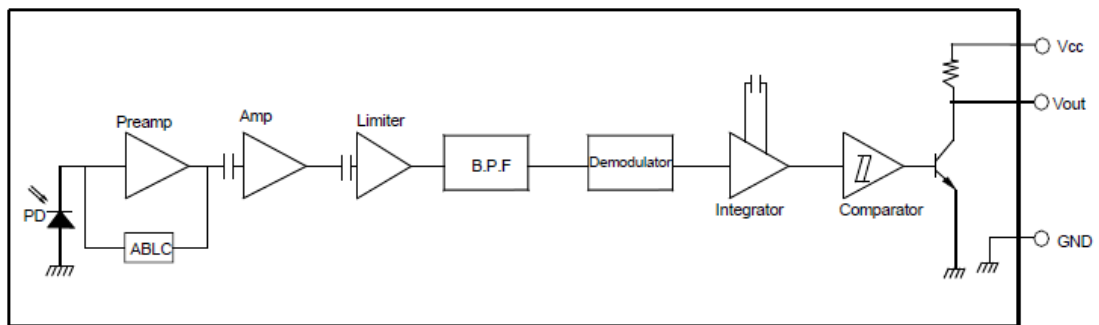
● **Electrical And Optical Characteristics**($T_a=25^{\circ}\text{C}$)

Parameter	Symbol	Ratings			Unit	Condition
		Min.	Typ.	Max.		
Supply Voltage	V_s	2.7	--	5.5	V	
Supply Current	I_{cc}	—	0.35	0.6	mA	$I_{in}=0\mu\text{A}, V_{cc}=5\text{V}$
Reception Distance	L_0	18	—	—	m	At the ray axis*1
	L_{35}	12	—	—		
B.P.F Center Frequency	f_0	—	38	—	KHz	
Peak Wavelength	λ_p	—	940	—	nm	
Half Angle	$\theta \pm$	—	35	—	deg	At the ray axis *1
High Level Pulse Width	T_H	450	600	750	μS	At the ray axis *2
Low Level Pulse Width	T_L	450	600	750	μS	
High Level Output Voltage	V_H	4.5	—	—	V	
Low Level Output Voltage	V_L	—	—	0.5	V	

*1: The ray receiving surface at a vertex and relation to the ray axis in the range of $\theta=0^{\circ}$ and $\theta=45^{\circ}$

*2: A range from 30cm to the arrival distance. Average value of 50 pulses

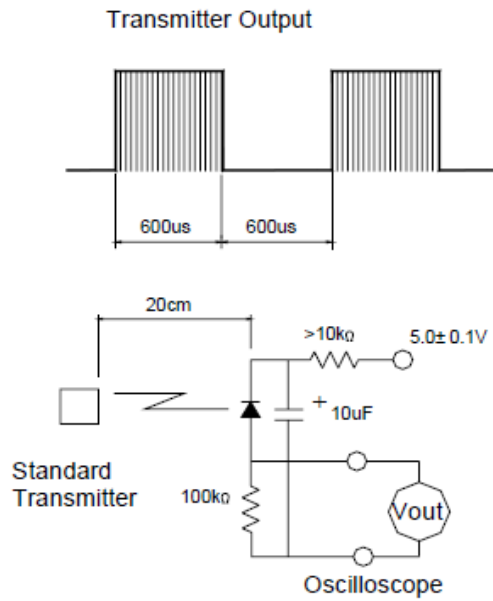
● **BLOCK DIAGRAM**



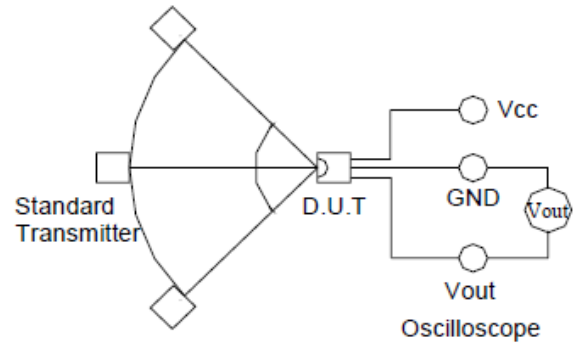
Data Sheet

● Test Method

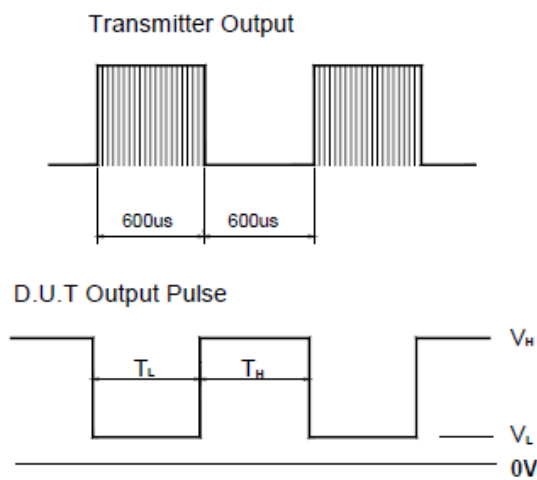
A. Standard Transmitter



B. Detection Length Test

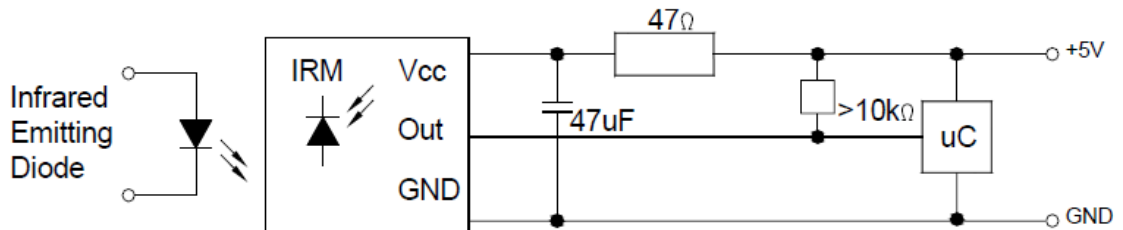


C. Pulse Width Test

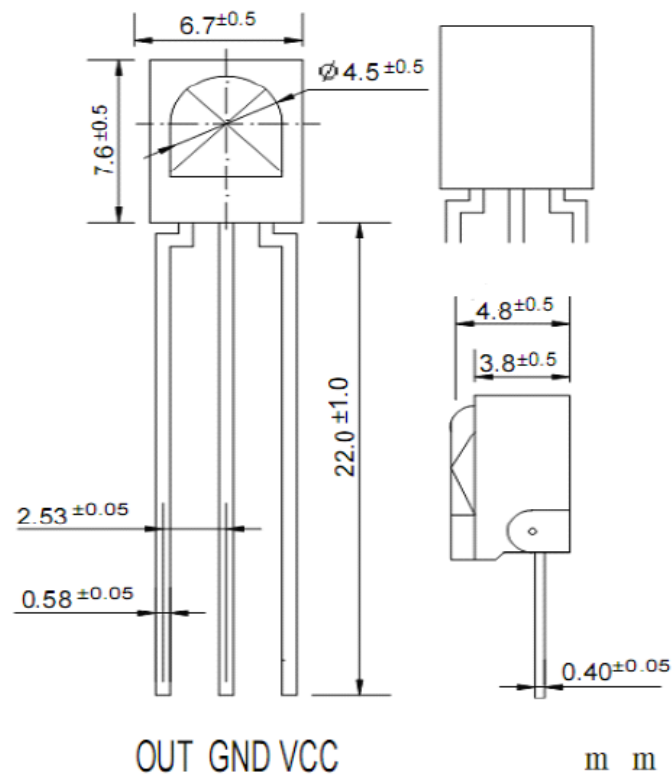


Data Sheet

● Application Circuit

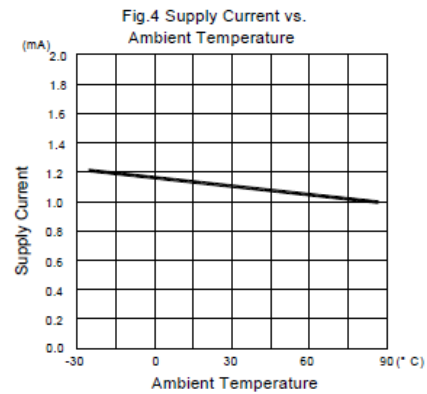
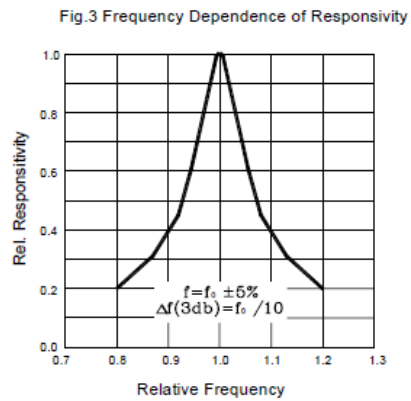
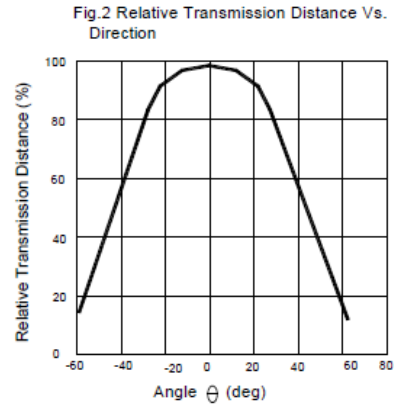
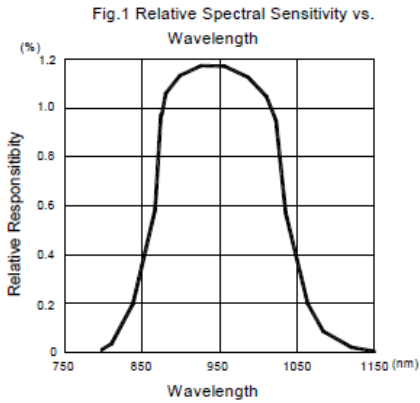


● Package Dimensions:



Data Sheet

● **Electrical And Optical Curves**($T_a=25^{\circ}\text{C}$)



NOTES:

- 1.All dimensions are in millimeters (inches).
- 2.Tolerance is $\pm 0.30\text{mm}$ (0.012") unless otherwise specified.
- 3.Specifications are subject to change without notice.

