

Solid-state relay module - RIF-0-OPT-24DC/230AC/1 - 2905295

Please be informed that the data shown in this PDF Document is generated from our Online Catalog. Please find the complete data in the user's documentation. Our General Terms of Use for Downloads are valid (<http://download.phoenixcontact.com>)



Pre-assembled solid-state relay module with push-in connection, consisting of: relay base with ejector and plug-in miniature solid-state relay. Input voltage: 24 V DC. Output: 24 - 253 V AC/0.75 A



Key commercial data

package_quantity	10
GTIN	4046356945431

Technical data

Note

Utilization restriction	EMC: class A product, see manufacturer's declaration in the download area
-------------------------	---------------------------------------------------------------------------

Dimensions

Width	6.2 mm
Height	93 mm
Depth	66 mm

Ambient conditions

Ambient temperature (operation)	-25 °C ... 60 °C
Ambient temperature (storage/transport)	-40 °C ... 85 °C
Degree of protection	IP20

Input data

Input voltage range	19.2 V DC ... 28.8 V DC
"0" signal switching threshold in reference to U _c	< 0.4
"1" signal switching threshold in reference to U _c	> 0.8
Typical response time	10 ms
Typical turn-off time	10 ms
Status display	Yellow LED
Type of protection	Free-wheeling diode
Transmission frequency	10 Hz
Power dissipation for nominal condition	0.19 W

Output data

Solid-state relay module - RIF-0-OPT-24DC/230AC/1 - 2905295

Technical data

Output data

Output voltage range	24 V AC ... 253 V AC (50/60 Hz)
Limiting continuous current	0.75 A (see derating curve)
Maximum inrush current	30 A (10 ms)
Min. load current	10 mA
Leakage current	1 mA (in off state)
Surge current	30 A AC (tp = 20 ms, at 25 °C)
Max. load value	4.5 A ² s (tp = 10 ms, at 25 °C)
Surge voltage protection	> 275 V
Voltage drop at max. limiting continuous current	< 1 V
Output circuit	2-wire, zero voltage switch
Type of protection	RCV circuit

Connection data input side

Connection name	Input side
Connection method	Push-in connection
Conductor cross section solid	0.14 mm ² ... 1.5 mm ²
Conductor cross section flexible	0.14 mm ² ... 1.5 mm ²
Conductor cross section AWG	26 ... 16

Connection data output side

Connection name	Output side
Connection method	Push-in connection
Conductor cross section solid	0.14 mm ² ... 1.5 mm ²
Conductor cross section flexible	0.14 mm ² ... 1.5 mm ²
Conductor cross section AWG	26 ... 16

General

Operating mode	100% operating factor
Degree of protection	IP20
Mounting position	any
Assembly instructions	In rows with zero spacing

Standards and Regulations

Designation	Air clearances and creepage distances between the power circuits
Standards/regulations	DIN EN 50178
Rated insulation voltage	260 V AC
Rated surge voltage	4 kV
Insulation	Basic insulation
Degree of pollution	2
Overvoltage category	III

Environmental Product Compliance

China RoHS	Environmentally Friendly Use Period = 50
-------------------	------------------------------------------

Solid-state relay module - RIF-0-OPT-24DC/230AC/1 - 2905295

Technical data

Environmental Product Compliance

China RoHS	For details about hazardous substances go to tab "Downloads", Category "Manufacturer's declaration"
-------------------	-----------------------------------------------------------------------------------------------------

Classifications

eCl@ss

eCl@ss 5.0	27371001
eCl@ss 5.1	27371001
eCl@ss 6.0	27371604
eCl@ss 7.0	27371604
eCl@ss 8.0	27371604
eCl@ss 9.0	27371604

ETIM

ETIM 2.0	EC001504
ETIM 3.0	EC001504
ETIM 4.0	EC001504
ETIM 5.0	EC001504
ETIM 6.0	EC001504

UNSPSC

UNSPSC 13.2	39122326
--------------------	----------

Accessories

End block

CLIPFIX 35 - 3022218



Test plug terminal block

MPS-MT - 0201744



Solid-state relay module - RIF-0-OPT-24DC/230AC/1 - 2905295

Accessories

Insulating sleeve

MPS-IH WH - 0201663



MPS-IH RD - 0201676



MPS-IH BU - 0201689



MPS-IH YE - 0201692



MPS-IH GN - 0201702



Solid-state relay module - RIF-0-OPT-24DC/230AC/1 - 2905295

Accessories

MPS-IH GY - 0201728



MPS-IH BK - 0201731



Terminal marking

ZB 6:UNBEDRUCKT - 1051003



Jumper

FBS 2-6 - 3030336



FBS 3-6 - 3030242



Solid-state relay module - RIF-0-OPT-24DC/230AC/1 - 2905295

Accessories

FBS 4-6 - 3030255



FBS 5-6 - 3030349



FBS 10-6 - 3030271



FBS 20-6 - 3030365



FBS 50-6 - 3032224



FBS 2-6 BU - 3036932



Solid-state relay module - RIF-0-OPT-24DC/230AC/1 - 2905295

Accessories

FBS 3-6 BU - 3036945



FBS 4-6 BU - 3036958



FBS 5-6 BU - 3036961



FBS 10-6 BU - 3032198



FBS 20-6 BU - 3032208



Solid-state relay module - RIF-0-OPT-24DC/230AC/1 - 2905295

Accessories

FBS 50-6 BU - 3032211



FBS 2-6 GY - 3032237



FBS 3-6 GY - 3032240



FBS 4-6 GY - 3032279



FBS 5-6 GY - 3032266



FBS 10-6 GY - 3032253

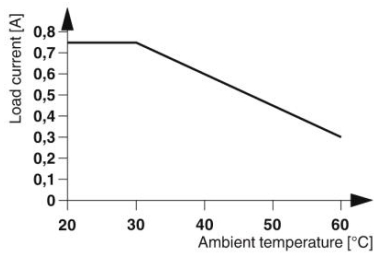


Solid-state relay module - RIF-0-OPT-24DC/230AC/1 - 2905295

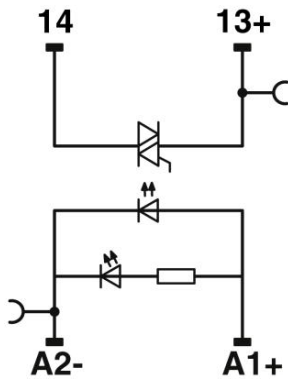
Accessories

Drawings

Diagram



Circuit diagram



Phoenix Contact 2016 © - all rights reserved
<http://www.phoenixcontact.com>