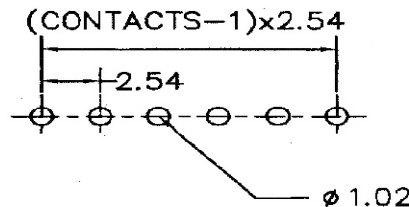


(CONTACTS-1) x 2.54



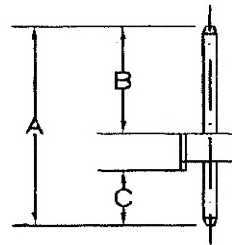
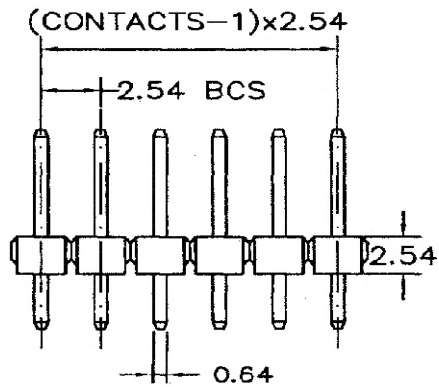
Recommended P.C. Board Layout

**SPECIFICATIONS**

**Current Rating:** 3 Amperes  
**Insulation Resistance:** 1000MΩ Min  
**Dielectric Withstanding:** 600V AC/DC  
**Contact Resistance:** 20mΩ Max.  
**Operating Temperature:** -40°C to +105°C

**MATERIALS**

**Contact Material:** Copper Alloy  
**Contact Plating:** Gold / Tin over Nickel  
**Insulator:** Glass Filled Polyester (UL 94V-0)  
 P.B.T or Nylon-6T  
**All materials must be RoHS compliant.**



| Dimensions(mm) |      |      |
|----------------|------|------|
| A              | B    | C    |
| 10.80          | 5.80 | 2.50 |