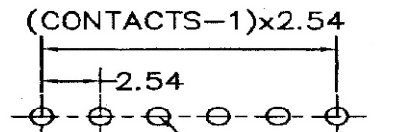


(CONTACTS-1)x2.54



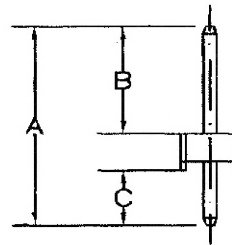
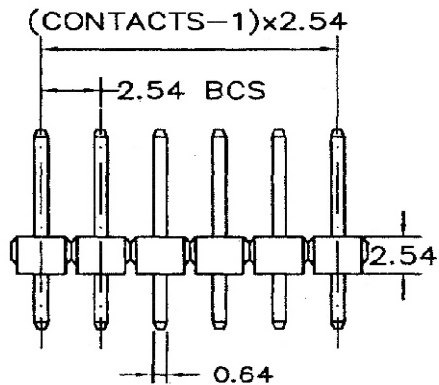
Recommended P.C.Board Layout

**SPECIFICATIONS**

- Current Rating:** 3 Amperes
- Insulation Resistance:** 1000MΩ Min
- Dielectric Withstanding:** 600V AC/DC
- Contact Resistance:** 20mΩ Max.
- Operating Temperature:** -40°C to +105°C

**MATERIALS**

- Contact Material:** Copper Alloy
  - Contact Plating:** Gold / Tin over Nickel
  - Insulator:** Glass Filled Polyester (UL 94V-0)  
P.B.T or Nylon-6T
- All materials must be RoHS compliant.**



Dimensions(mm)		
A	B	C
10.80	5.80	2.50