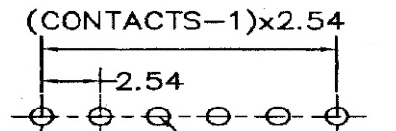


(CONTACTS-1)x2.54



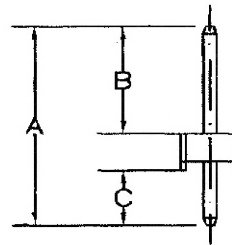
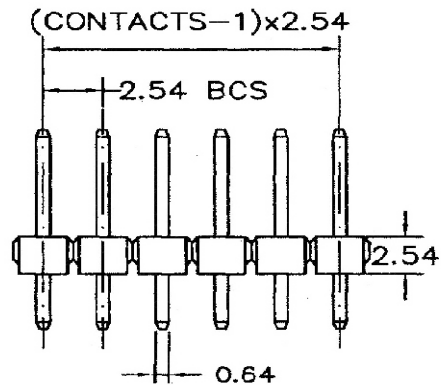
Recommended P.C. Board Layout

SPECIFICATIONS

- Current Rating:** 3 Amperes
- Insulation Resistance:** 1000MΩ Min
- Dielectric Withstanding:** 600V AC/DC
- Contact Resistance:** 20mΩ Max.
- Operating Temperature:** -40°C to +105°C

MATERIALS

- Contact Material:** Copper Alloy
 - Contact Plating:** Gold / Tin over Nickel
 - Insulator:** Glass Filled Polyester (UL 94V-0)
P.B.T or Nylon-6T
- All materials must be RoHS compliant.**



Dimensions(mm)		
A	B	C
10.80	5.80	2.50



Distributed by Conrad Electronic SE • Klaus-Conrad-Str. 1 • D-92240 Hirschau

Datasheet

Item no. 001580877

V1_0617_02