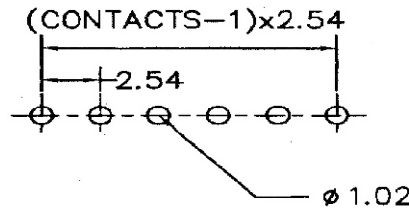
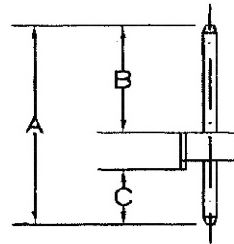
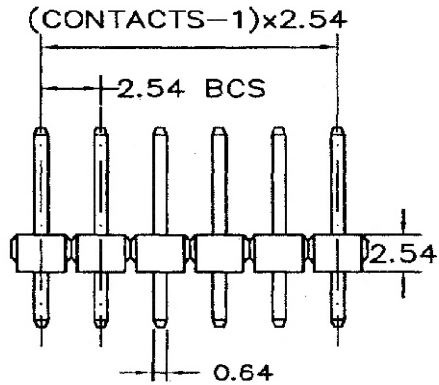


(CONTACTS-1)x2.54



Recommended P.C.Board Layout



SPECIFICATIONS

Current Rating: 3 Amperes

Insulation Resistance: 1000MΩ Min

Dielectric Withstanding: 600V AC/DC

Contact Resistance: 20mΩ Max.

Operating Temperature: -40°C to +105°C

MATERIALS

Contact Material: Copper Alloy

Contact Plating: Gold / Tin over Nickel

Insulator: Glass Filled Polyester (UL 94V-0)

P.B.T or Nylon-6T

All materials must be RoHS compliant.

Dimensions(mm)		
A	B	C
10.80	5.80	2.50