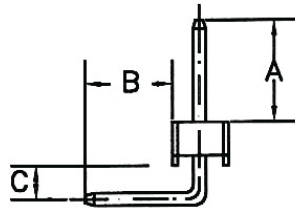
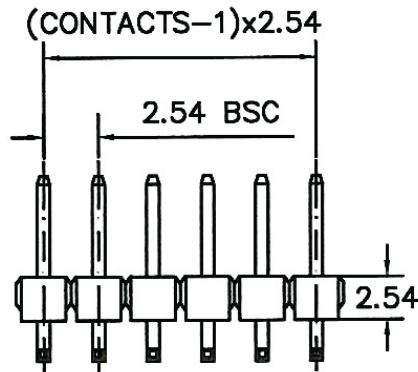


RECOMMENDED P.C.B LAYOUT



A: 4.5mm B: 3.3mm C: 1.27mm

#### MATERIAL

HOUSING : THERMOPLASTIC UL94V-0  
CONTACT : COPPER ALLOYS

#### SPECIFICATION

CURRENT: 3A  
OPERATING TEMPERATURE: -55°C TO +105°C  
CONTACT RESISTANCE : 20 MILLIOHMS MAX  
INSULATION RESISTANCE : 1000 MEGAOHMS MIN  
WITHSTANDING VOLTAGE: AC 1000V RMS