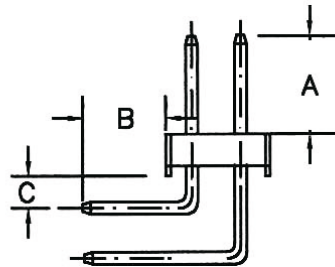
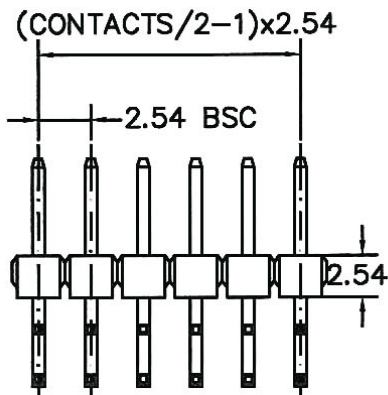


RECOMMENDED P.C.B LAYOUT



A: 4.0mm B: 2.8mm C: 1.27mm

MATERIAL

HOUSING : THERMOPLASTIC UL94V-0  
CONTACT : COPPER ALLOYS

SPECIFICATION

CURRENT: 3A  
OPERATING TEMPERATURE: -55°C TO +105°C  
CONTACT RESISTANCE : 20 MILLIOHMS MAX  
INSULATION RESISTANCE : 1000 MEGAOHMS MIN  
WITHSTANDING VOLTAGE : AC 1000V RMS