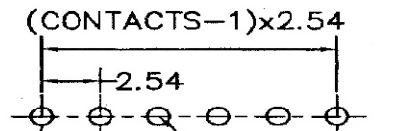


(CONTACTS-1)x2.54



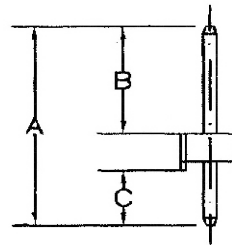
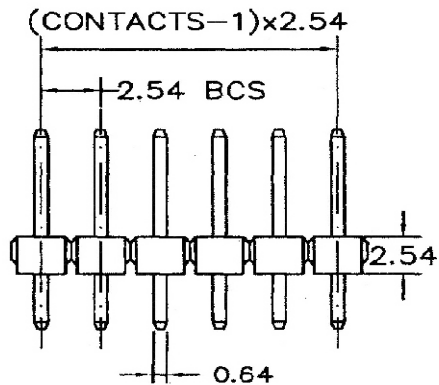
Recommended P.C.Board Layout

SPECIFICATIONS

- Current Rating: 3 Amperes
- Insulation Resistance: 1000MΩ Min
- Dielectric Withstanding: 600V AC/DC
- Contact Resistance: 20mΩ Max.
- Operating Temperature: -40°C to +105°C

MATERIALS

- Contact Material: Copper Alloy
- Contact Plating: Gold / Tin over Nickel
- Insulator: Glass Filled Polyester (UL 94V-0)
P.B.T or Nylon-6T
- All materials must be RoHS compliant.



| Dimensions(mm) | | |
|----------------|------|------|
| A | B | C |
| 10.80 | 5.80 | 2.50 |