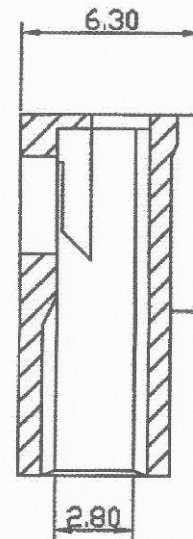


### Specifications

Current Rating: 3A AC, DC  
 Voltage Rating: 250 AC Maximum  
 Operating Temp: -25°C ~ + 85°C  
 Contact Resistance: 20mΩ Max  
 Insulation Resistance: 1000MΩ Min  
 Terminal Material: Brass/ Tin-plated/ Gold-plated  
 Material: Nylon 66, UL94V-2



Poles	Dimension mm (in.)	
	A	B
2	2.54 (0.100)	5.64 (0.222)
3	5.08 (0.200)	8.16 (0.321)
4	7.62 (0.300)	10.72 (0.422)
5	10.16 (0.400)	13.30 (0.524)
6	12.70 (0.500)	15.78 (0.621)
7	15.24 (0.600)	18.40 (0.724)
8	17.78 (0.700)	20.80 (0.819)
9	20.32 (0.800)	23.50 (0.925)
10	22.86 (0.900)	26.00 (1.024)
11	25.40 (1.000)	28.50 (1.122)
12	27.94 (1.100)	31.00 (1.220)
13	30.48 (1.200)	33.50 (1.319)
14	32.02 (1.300)	36.00 (1.417)
15	35.56 (1.400)	38.50 (1.516)
16	38.10 (1.500)	41.20 (1.622)
17	40.64 (1.600)	43.60 (1.717)
18	43.18 (1.700)	46.32 (1.824)
19	45.72 (1.800)	48.80 (1.921)
20	48.26 (1.900)	51.34 (2.021)