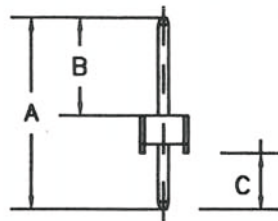
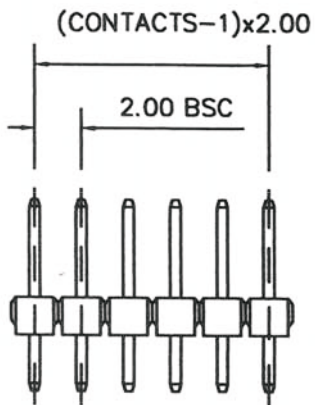


RECOMMENDED P.C.B LAYOUT



1x20 pol.

A: 8.70 mm B: 4.00 mm C: 2.70 mm

### SPECIFICATIONS

**Current Rating:** 1.0 Amp

**Dielectric Withstand:** 1000V AC

**Insulator Resistance:** 5000 MΩ min.

**Contact Resistance:** 20mΩ Max.

**Operating Temperature:** -55°C to + 105°C

### MATERIALS

**Insulator:** Thermoplastic, UL94V-0

P.B.T or Nylon-6T

**Contacts:** Copper Alloy

**All materials must be RoHS compliant.**