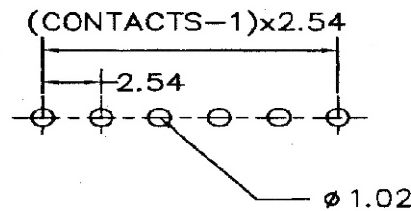


(CONTACTS-1)x2.54



Recommended P.C.Board Layout

SPECIFICATIONS

Current Rating: 3 Amperes

Insulation Resistance: 1000M Ω Min

Dielectric Withstanding: 600V AC/DC

Contact Resistance: 20m Ω Max.

Operating Temperature: -40 $^{\circ}$ c to +105 $^{\circ}$ c

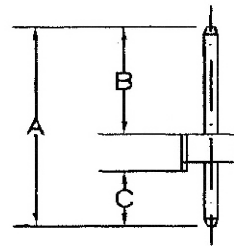
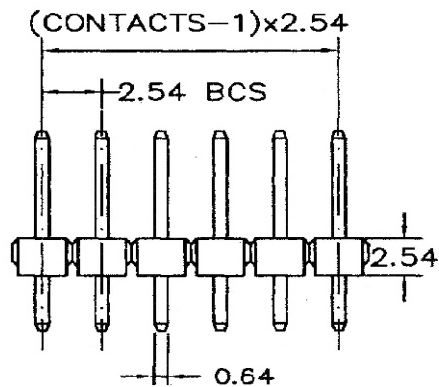
MATERIALS

Contact Material: Copper Alloy

Contact Plating: Gold / Tin over Nickel

Insulator: Glass Filled Polyester (UL 94V-0)
P.B.T or Nylon-6T

All materials must be RoHS compliant.



| Dimensions(mm) | | |
|----------------|------|------|
| A | B | C |
| 12,60 | 5.80 | 2.50 |