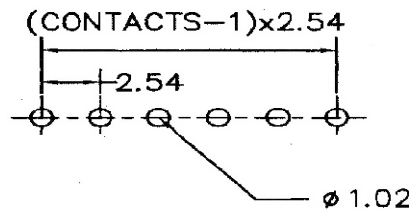


(CONTACTS-1) x 2.54



Recommended P.C. Board Layout

SPECIFICATIONS

Current Rating: 3 Amperes

Insulation Resistance: 1000MΩ Min

Dielectric Withstanding: 600V AC/DC

Contact Resistance: 20mΩ Max.

Operating Temperature: -40°C to +105°C

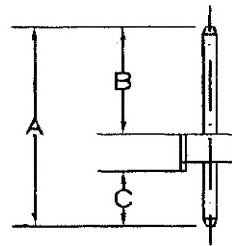
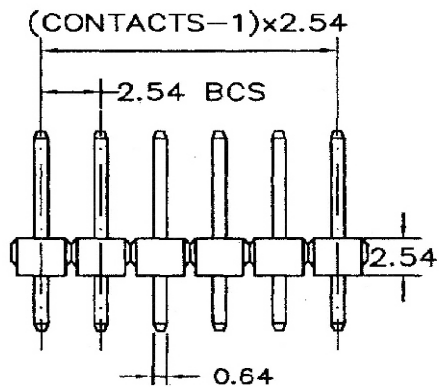
MATERIALS

Contact Material: Copper Alloy

Contact Plating: Gold / Tin over Nickel

Insulator: Glass Filled Polyester (UL 94V-0)
P.B.T or Nylon-6T

All materials must be RoHS compliant.



Dimensions(mm)		
A	B	C
12.60	5.80	2.50