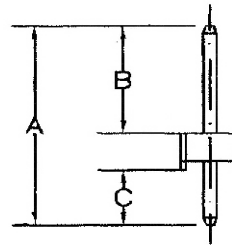
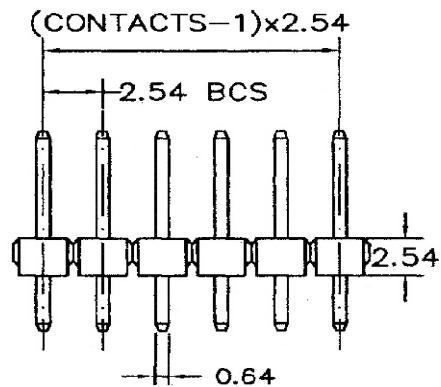


Recommended P.C.Board Layout



### SPECIFICATIONS

**Current Rating:** 3 Amperes

**Insulation Resistance:** 1000MΩ Min

**Dielectric Withstanding:** 600V AC/DC

**Contact Resistance:** 20mΩ Max.

**Operating Temperature:** -40°C to +105°C

### MATERIALS

**Contact Material:** Copper Alloy

**Contact Plating:** Gold / Tin over Nickel

**Insulator:** Glass Filled Polyester (UL 94V-0)

P.B.T or Nylon-6T

**All materials must be RoHS compliant.**

Dimensions(mm)		
A	B	C
12.60	5.80	2.50