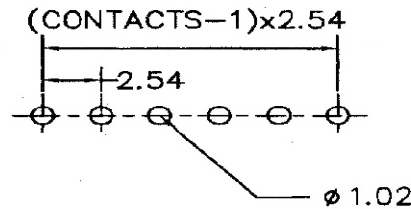


(CONTACTS-1)x2.54



Recommended P.C.Board Layout

### SPECIFICATIONS

**Current Rating:** 3 Amperes

**Insulation Resistance:** 1000MΩ Min

**Dielectric Withstanding:** 600V AC/DC

**Contact Resistance:** 20mΩ Max.

**Operating Temperature:** -40°C to +105°C

### MATERIALS

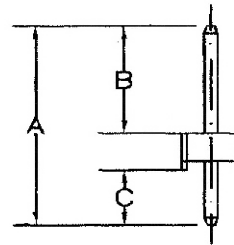
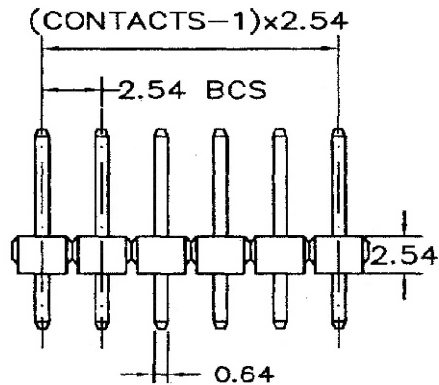
**Contact Material:** Copper Alloy

**Contact Plating:** Gold / Tin over Nickel

**Insulator:** Glass Filled Polyester (UL 94V-0)

P.B.T or Nylon-6T

**All materials must be RoHS compliant.**



Dimensions(mm)		
A	B	C
11,60	5,80	2,50