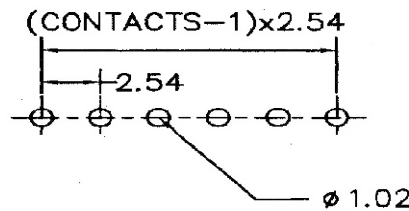


(CONTACTS-1) x 2.54



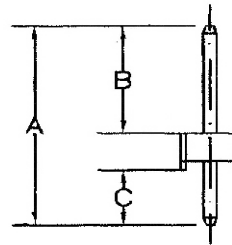
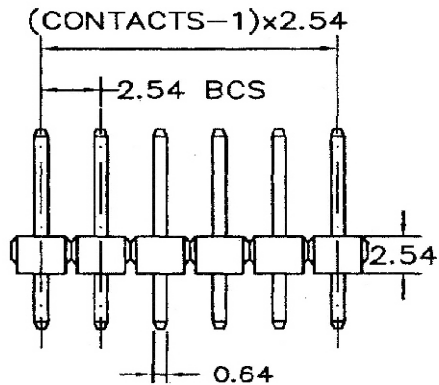
Recommended P.C. Board Layout

SPECIFICATIONS

Current Rating: 3 Amperes
Insulation Resistance: 1000MΩ Min
Dielectric Withstanding: 600V AC/DC
Contact Resistance: 20mΩ Max.
Operating Temperature: -40°C to +105°C

MATERIALS

Contact Material: Copper Alloy
Contact Plating: Gold / Tin over Nickel
Insulator: Glass Filled Polyester (UL 94V-0)
 P.B.T or Nylon-6T
All materials must be RoHS compliant.



Dimensions(mm)		
A	B	C
11.60	5.80	2.50