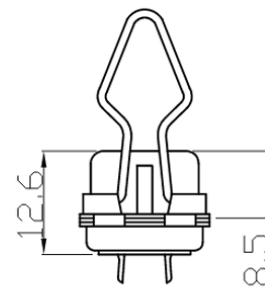
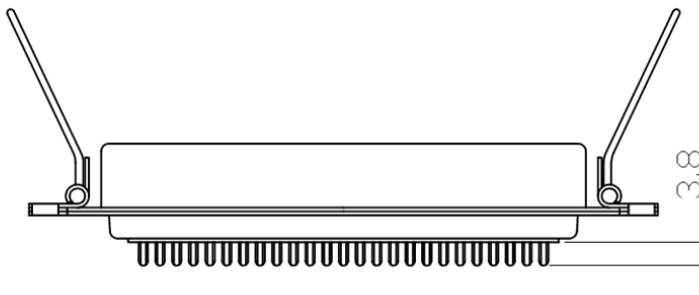
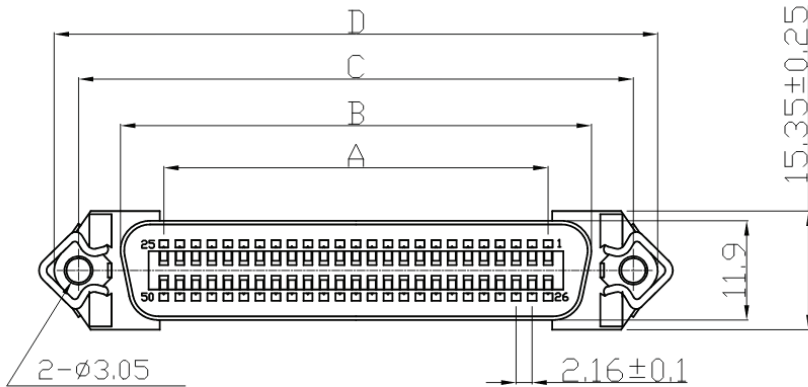


# Datasheet

Item no. 1586419

V1\_0617\_02\_EN



### Material & finish

SHELL: Steel Zinc plated

PIN CONTACT: Brass Gold flash selective gold plated

INSULATOR: PBT & Glass-fibre reinforced UL 94V-0 Blue

NUMBER OF CONTACT: 14, 24, 36, 50

CURRENT RATING: 5 Amp

DIELECTRIC STRENGTH: 1000V for one minute

INSULATOR RESISTANCE: 1000M Min. (at 500V DC)

TEMPERATURE: -55°C to +105°C

### Dimensions

| Positions | A     | B    | C    | D    |
|-----------|-------|------|------|------|
| 24        | 23.76 | 36.0 | 46.8 | 54.9 |

RoHS compliant