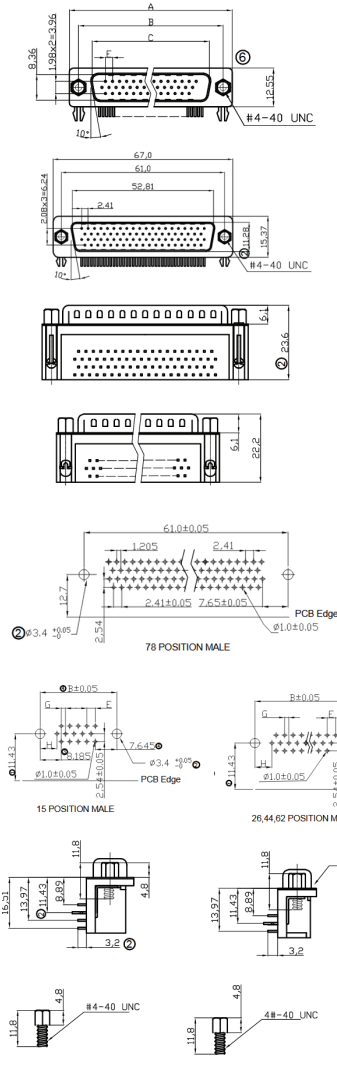


# Datasheet

Item no. 1586457

V1\_0617\_02\_EN

## Male



Dimensions				
Positions	A	B	C	E
44	53.05	47.04	38.96	2.29

Positions		
Positions	G	H
44MF	1.145	6.88

### Product Specification

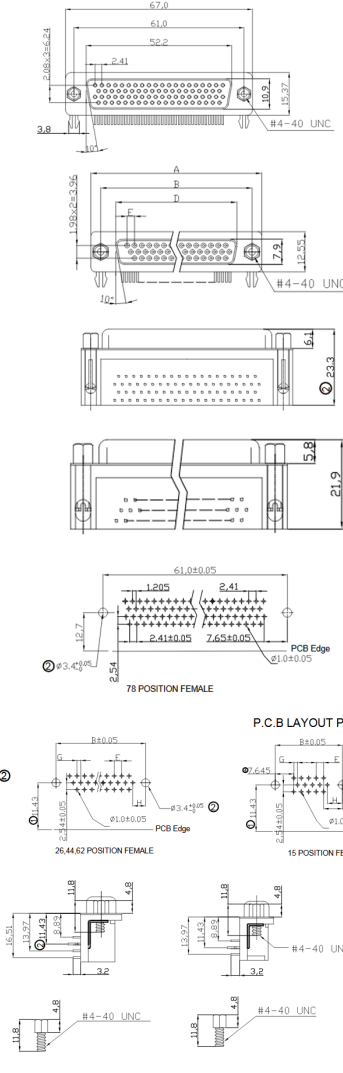
#### Material

Insulator :Glass-Filled Thermoplastic PBT,UL94V-0 rated ,Black  
 Contact : Copper alloy, Gold flash full gold  
 Shell : Steel,100u" Tin Over 50u" min Copper  
 Clinch Nut: Brass, 100u" min Nickel Plated.  
 Boardlock :Brass, 100u" min Nickel Plated.  
 Screwlock :Brass, 100u" min Nickel Plated.

#### Electrical

Contact Resistance :20 milliohms Max at 1 AMP DC.  
 Insulation Resistance :1000 magohms at 500 VDC  
 Dielectric Withstanding Voltage : 1000 VAC/rms 60Hz for 1 minute  
 Current Rating :3 AMP  
 Volatge Rating :250 VAC/rms 60Hz  
 Operating Temperature: -55°C ~ +105°C

## Female



Dimensions				
Positions	A	B	D	E
44	53.05	47.04	38.40	2.29

Positions		
Positions	G	H
44MF	1.145	6.88

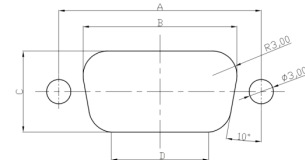
### Product Specification

#### Material

Insulator :Glass-Filled Thermoplastic PBT,UL94V-0 rated ,Black  
 Contact : Copper alloy, Gold flash full gold  
 Shell : Steel,100u" Tin Over 50u" min Copper  
 Clinch Nut: Brass, 100u" min Nickel Plated.  
 Boardlock :Brass, 100u" min Nickel Plated.  
 Screwlock :Brass, 100u" min Nickel Plated.

#### Electrical

Contact Resistance :20 milliohms Max at 1 AMP DC.  
 Insulation Resistance :1000 magohms at 500 VDC  
 Dielectric Withstanding Voltage : 1000 VAC/rms 60Hz for 1 minute  
 Current Rating :3 AMP  
 Volatge Rating :250 VAC/rms 60Hz  
 OPERATING TEMPERATURE:-55°C~+105°C



Recommended Panel Cut-Out

POSITION	A	B	C	D
44	47.04	42.52	10.67	34.06

**RoHS compliant**  
 Unit: mm