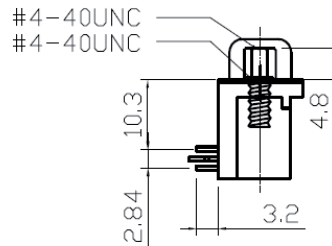
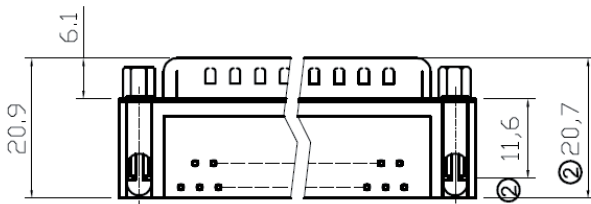
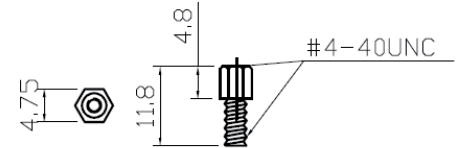


RECOMMENDED PCB LAYOUT



Material

Insulator : Glass-Filled thermoplastic PBT
UL94V-0 rated

Contact : Brass

Shell : Steel

Electrical

Contact Resistance : 20 milliohms
Max at 1 AMP DC.

Insulation Resistance : 1000
magohms at 500 VDC

Dielectric Withstanding Voltage :
1000 VAC/rms 60Hz for 1 minute

Current Rating : 5AMP

Volatge Rating : 250 VAC/rms 60Hz

① Solder temp for wave soldering :220 ± 5°C,3-5 s

A	B	C	E
39.20	33.30	25.25	19.39

RoHS compliant

Unit:mm



File No.: E198287