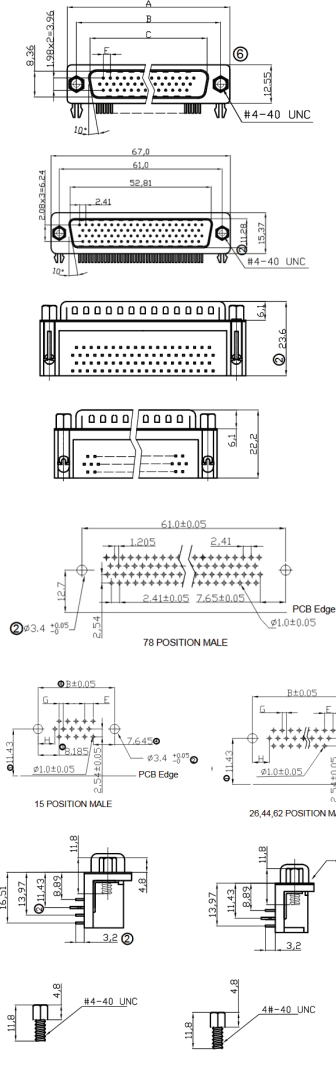


Male



| Dimensions | | | | |
|------------|-------|-------|-------|------|
| Positions | A | B | C | E |
| 26 | 39.20 | 33.30 | 25.25 | 2.29 |
| Positions | | | | |
| 20MF | 1.145 | 6.88 | | |

Product Specification

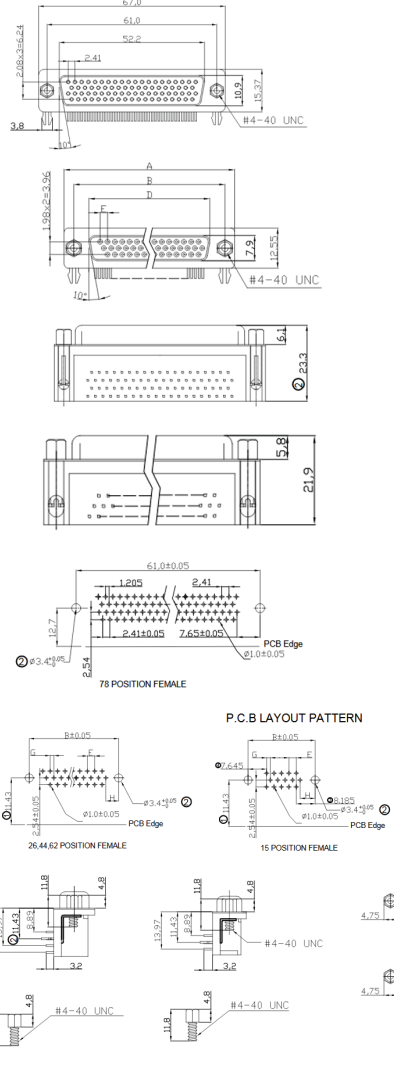
Material

Insulator :Glass-Filled Thermoplastic PBT,UL94V-0 rated ,Black
 Contact : Copper alloy, Gold flash full gold
 Shell : Steel,100u" Tin Over 50u" min Copper
 Clinch Nut: Brass, 100u" min Nickel Plated.
 Boardlock :Brass, 100u" min Nickel Plated.
 Screwlock :Brass, 100u" min Nickel Plated.

Electrical

Contact Resistance :20 milliohms Max at 1 AMP DC.
 Insulation Resistance :1000 magohms at 500 VDC
 Dielectric Withstanding Voltage : 1000 VAC/rms 60Hz for 1 minute
 Current Rating :3 AMP
 Volatge Rating :250 VAC/ms 60Hz
 Operating Temperature: -55°C ~ +105°C

Female



| Dimensions | | | | |
|------------|-------|-------|-------|------|
| Positions | A | B | D | E |
| 26 | 39.20 | 33.30 | 24.70 | 2.29 |
| Positions | | | | |
| 20MF | 1.145 | 6.88 | | |

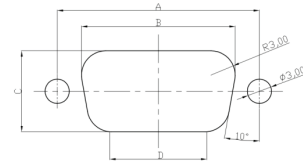
Product Specification

Material

Insulator :Glass-Filled Thermoplastic PBT,UL94V-0 rated ,Black
 Contact : Copper alloy, Gold flash full gold
 Shell : Steel,100u" Tin Over 50u" min Copper
 Clinch Nut: Brass, 100u" min Nickel Plated.
 Boardlock :Brass, 100u" min Nickel Plated.
 Screwlock :Brass, 100u" min Nickel Plated.

Electrical

Contact Resistance :20 milliohms Max at 1 AMP DC.
 Insulation Resistance :1000 magohms at 500 VDC
 Dielectric Withstanding Voltage : 1000 VAC/rms 60Hz for 1 minute
 Current Rating :3 AMP
 Volatge Rating :250 VAC/ms 60Hz
 OPERATING TEMPERATURE:-55°C ~ +105°C



Recommended Panel Cut-Out

| POSITION | A | B | C | D |
|----------|-------|-------|-------|-------|
| 44 | 47.04 | 42.52 | 10.67 | 34.06 |