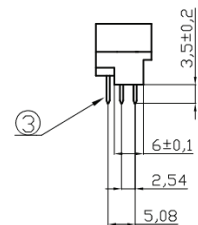
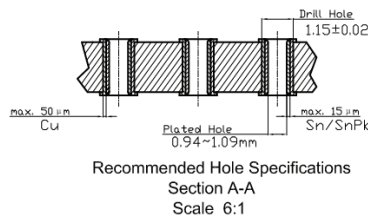


Recommended PCB Hole Layout  
Component Side  
Scale 1:1

## NOTES:

- ① Connector Meets Requirement OF DIN 41612
- ② Material:
  - 1.Housing : Glass-Filled PBT. Color: Grey, UL 94V-0
  - 2.Contact : Copper Alloy
- ③ Contact Tail Dimension
 

|             |              |
|-------------|--------------|
| Thickness   | :0.48±0.03mm |
| Width       | :0.48±0.03mm |
| Tail Length | :3.5-0.2mm   |
- ④ Contact Finish(Option in Part Number "x" )
  - 1: 25 $\mu$ " (0.63 $\mu$ m)Pd/Ni and 2 $\mu$ "Gold Plating on Mating Area ,100 $\mu$ "(2.54um)Tin Plating on Tail Area, Flash Gold Plating on Non-mating Area,50 $\mu$ " (1.27 $\mu$ m)Nickel Underplate All Over
  - 2: 12 $\mu$ " (0.30 $\mu$ m)Pd/Ni and 2 $\mu$ "Gold Plating on Mating Area ,100 $\mu$ "(2.54um)Tin Plating on Tail Area, Flash Gold Plating on Non-mating Area,50 $\mu$ " (1.27 $\mu$ m)Nickel Underplate All Over
  - Blank: Flash Gold Plating on mating and non-mating Area, Tin Plating on Tail Area,Nickel Underplate All Over
- ⑤ Connector Printed with Part Number,and Batch Number



**RoHS compliant**  
UNIT:mm