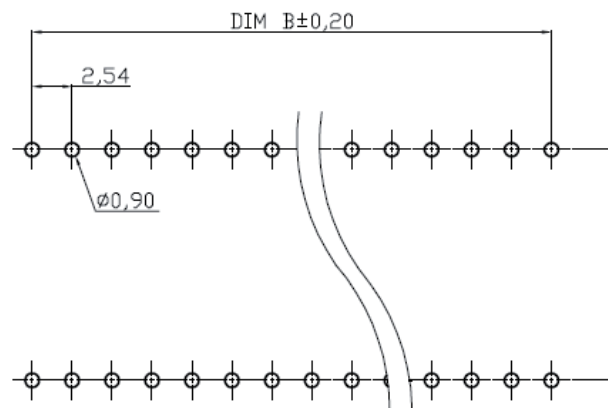
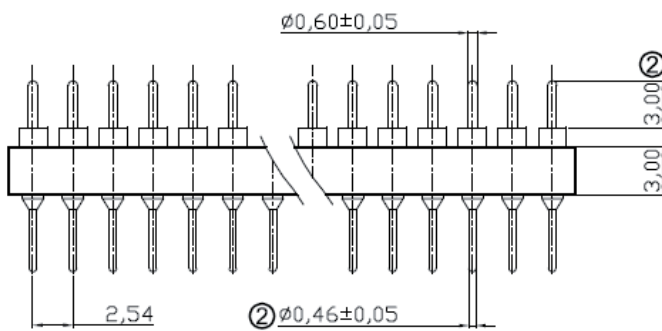
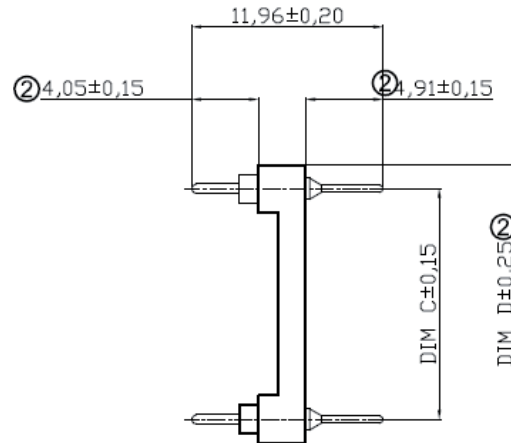
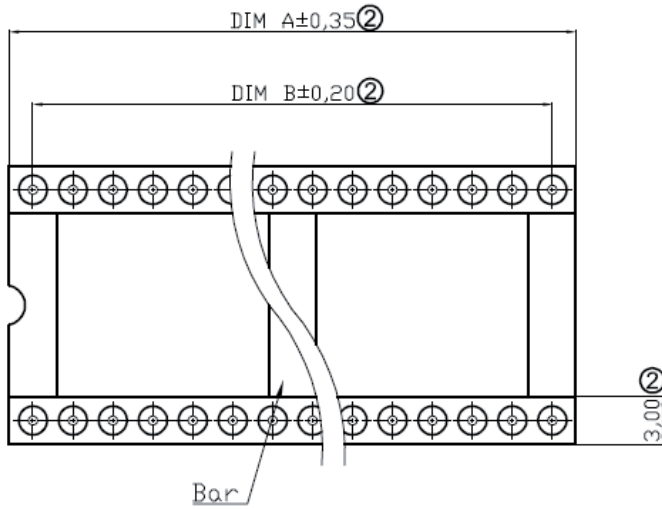


# Datasheet

Item no. 1586569

V1\_0617\_02\_EN



PCB LAYOUT

Contact	Dlm A	Dlm B	Dlm C	Dlm D	Note
14	17.78	15.24	7.62	10.16	w/o Bar

**RoHS compliant**

**NOTES:**

**MATERIAL**

- 1.Pin(outer sleeve): Brass, machined CuZn
- 2.Plating(outer sleeve): 2um/80u"nickel, Gc
- 3.Insulator Material: Glass filled PBT(UL94V

**ELECTRICAL**

- 1.Current Rating: 3Amps/contact max.
- 2.Contact Resistance: 4mΩ/contact max.
- 3.Insulation Resistance: ≥10000MΩ at 500V
- 4.Voltage Rating: 100 VRMS/150VDC

**MECHANICAL**

- 1.Operation Temperature: -55°C to +105°C
- 2.Soldering temperature: +220°C, 10s max.

Packing: Tube