
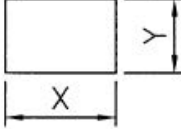
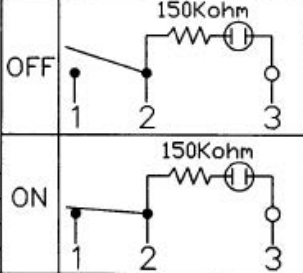
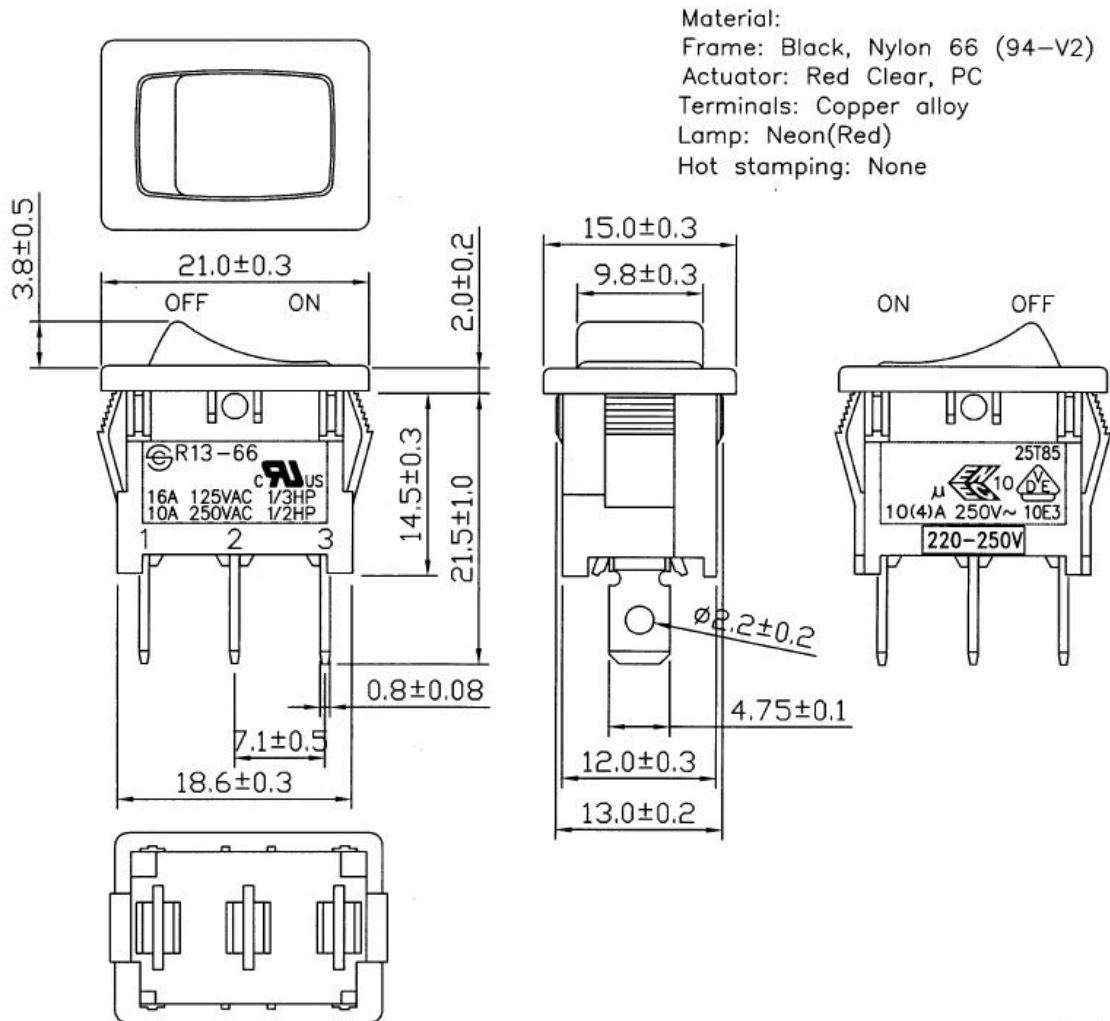


Rocker switch 3P SPST ON-OFF (LED or Lamp)

Rating	16A 125VAC 1/3HP 10A 250VAC 1/2HP		Mounting Hole			Circuit Diagram	
	10(4)A 250V~						
Contact Resistance	50m ohm Max.						
Insulation Resistance	DC 500V 100M ohm Min.						
Dielectric Strength	AC 1500V 1 minute						
Operation Temperature	-20°C~85°C			Thickness	X	Y	
Switch Function	3P SPST ON-OFF(Neon)			0.75...1.25	19.2-0.1	13.2+0.1	
				1.25...2	19.4-0.1	13.2+0.1	
				2...3	19.8-0.1	13.2+0.1	



Unit: mm