
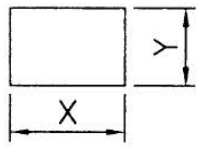
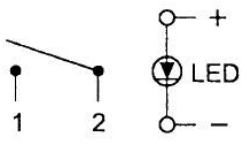

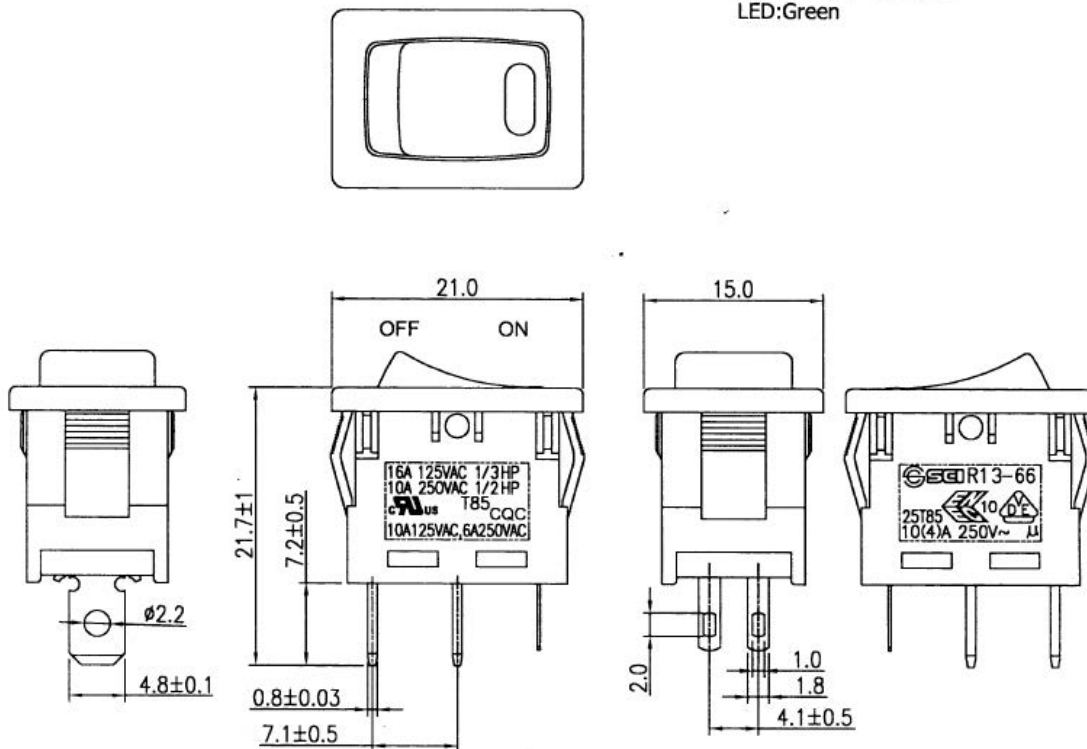


Rocker Switch, GREEN

Rating	16A 125VAC 1/3HP 10A 250VAC 1/2HP		Mounting Hole 	Circuit Diagram 	
	10(4)A 250V~				
	10A125VAC, 6A250VAC	CQC			
Contact Resistance	50m ohm Max.				
Insulation Resistance	DC 500V 100M ohm Min.				
Dielectric Strength	AC 1500V 1 minute				
Operation Temperature	-25°C~85°C		Thickness		
				X	Y
			0.75...1.25	19.2-0.1	13.2+0.1
Switch Function	4P SPST ON-OFF (LED independent)		1.25...2	19.4-0.1	13.2+0.1
			2...3	19.8-0.1	13.2+0.1
			LED Rating Green:@20mA,If=2.0VDC		

Material:
 Frame: Black, Nylon#66
 Actuator: Black, Nylon#66
 Lens: Green Clear, PC
 LED:Green



Tolerances ±0.3 Unless Otherwise Specified Unit: mm

This is a publication by Conrad Electronic SE, Klaus-Conrad-Str. 1, D-92240 Hirschau (www.conrad.com).

All rights including translation reserved. Reproduction by any method, e.g. photocopy, microfilming, or the capture in electronic data processing systems require the prior written approval by the editor. Reprinting, also in part, is prohibited. This publication represents the technical status at the time of printing.

© Copyright 2017 by Conrad Electronic SE.