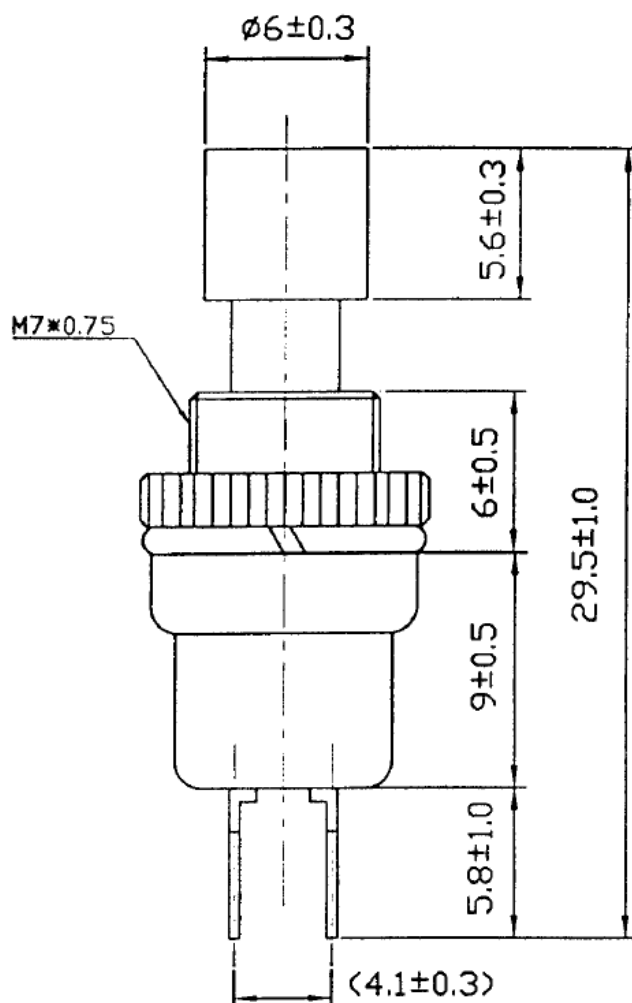
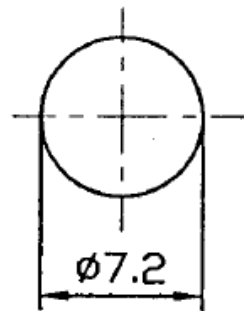


Data Sheet

Pushbutton 250 Vac 1.5 A 1 x Off/(On) momentary



Mount Hole



Data Sheet

Technical data

Rating: 1.5 A, 250 V/AC

Contact R: 50m ohm max.

Insulation R: DC 500V, 100M ohm min.

Dielectric strength: AC 1000V, 1 minute

Contact travel: 1.6-2.0 mm