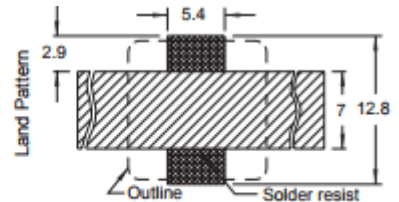
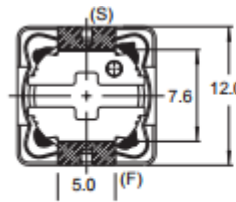
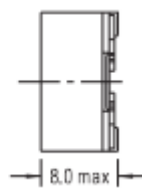
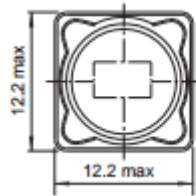
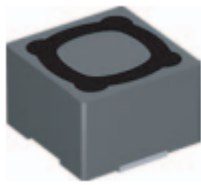


Datasheet

Item no. 1589045, 1589046, 1589047, 1589172, 1589173, 1589048, 1589049, 1589050, 1589174, 1589175, 1589176

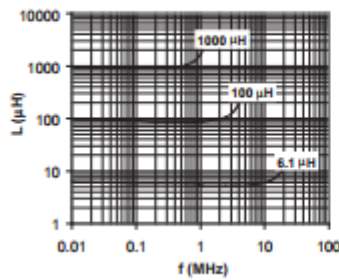


* In order to prevent short circuit, a solder resist is recommended

Part No	Inductance L (μH)	f _L (kHz)	Tol ± (%)	DCR max (Ω)	Rated DC Current I _{SAT} (A)
TC-PIS4728-150M-04203	15	1	20	27	4.5
TC-PIS4728-220M-04203	22	1	20	43.2	3.6
TC-PIS4728-270M-04203	27	1	20	45.9	3.4
TC-PIS4728-330M-04203	33	1	20	64.8	3
TC-PIS4728-470M-04203	47	1	20	100	2.5
TC-PIS4728-101M-04203	100	1	20	220	1.7
TC-PIS4728-221M-04203	220	1	20	390	1.6
TC-PIS4728-271M-04203	270	1	20	560	1.06
TC-PIS4728-331M-04203	330	1	20	640	0.95
TC-PIS4728-471M-04203	470	1	20	980	0.79
TC-PIS4728-681M-04203	680	1	20	1480	0.67

Material: Ferrite

Typical L vs Frequency(f)



Typical L vs Current

