

Datasheet

SPECIFICATIONS TC-D28b-xxBTBB6-G

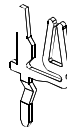
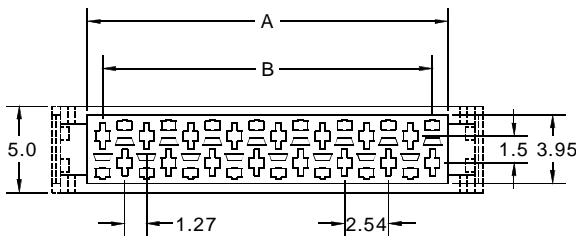
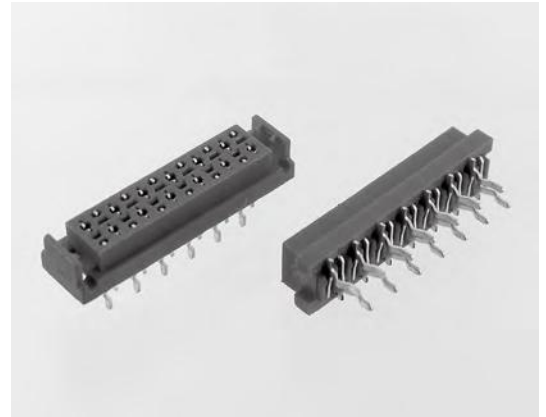
Material

Insulator : PBT, glass reinforced, rated UL 94V-0
 Contact : Phosphor Bronze

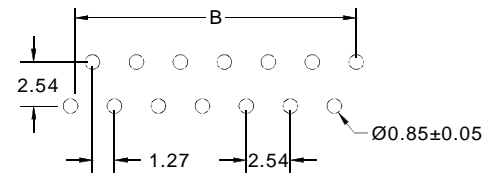
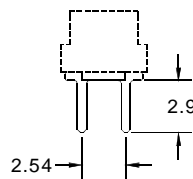
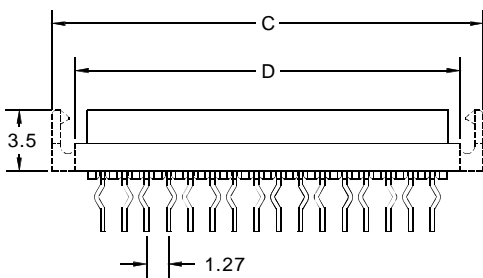
Electrical

Current Rating : 1 Amp
 Contact Resistance : 30 mΩ max.
 Insulation Resistance : 3000 MΩ min.
 Dielectric Withstanding Voltage : 500V AC for 1minute
 Operating Temperature : -40°C to +105°C

► Mating Suggestion: TC-D28, TC-D28e series.



POSITION	A	B	C	D
4	5.59	3.81	9.66	6.98
6	8.13	6.35	12.20	9.52
8	10.67	8.89	14.74	12.06
10	13.21	11.43	17.28	14.60
12	15.75	13.97	19.82	17.14
14	18.29	16.51	22.36	19.68
16	20.83	19.05	24.90	22.22
18	23.37	21.59	27.44	24.76
20	25.91	24.13	29.98	27.30
22	28.45	26.67	32.52	29.84
24	30.99	29.21	35.06	32.38
26	33.53	31.75	37.60	34.92



RECOMMENDED P.C.B LAYOUT

How to order: TC-D28b - 1 - 2 - 3 - 4 - 5 - 6 - G(RoHS) Pitch 2,54mm x 1,5mm

1.NO. OF CONTACT	2.CONTACT MATERIAL	3.CONTACT PLATING	4.SPECIAL FUNCTION	5.PARTS OPTION	6.INSULATOR COLOR
04 06 08 10 12 14 16 18 20 22 24 26	B: PHOSPHOR BRONZE	T: TIN PLATED S: SELECTIVE G: GOLD FLASH A: 5u" INCH GOLD B: 10u" INCH GOLD C: 15u" INCH GOLD D: 30u" INCH GOLD	A:W POLARIZATION B:W/O POLARIZATION	A:WITH LOCKING B:W/O LOCKING	6. RED