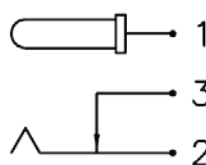
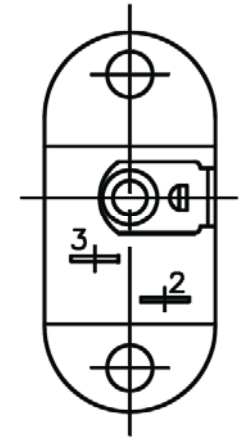
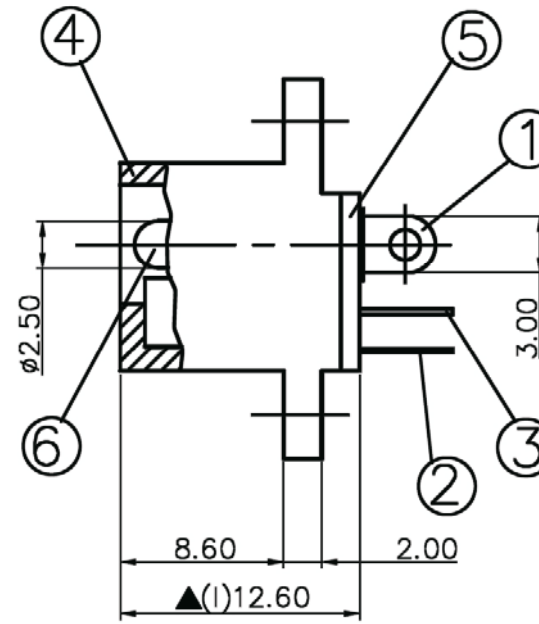
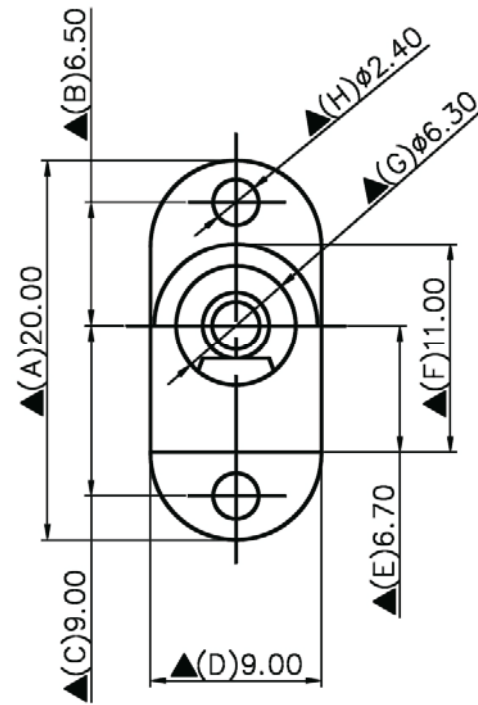


SCHEMATIC	
MODEL NO	C



NO.	Description	Material	Q'TY	Finish
6.	Pin(2.5 ϕ)	Copper	1	Nickel Plated
5.	Cover	1.0T Bakelite	1	Natural
4.	Housing	POM	1	Black Color
3.	Break Terminal	0.3T Bronze	1	Silver Plated
2.	Sleeve Spring	0.2T Phosphor Bronze	1	Silver Plated
1.	Pin Terminal	0.4T Bronze	1	Silver Plated

SPECIFICATIONS:
 Contact Resistance : 30m Ω max
 Current Rating : Max 5.0A , 24VDC
 Insulation Resistance : 100M Ω min. at DC 500V
 Dielectric Withstanding Voltage: AC 500V for one minute