

dLAN® 1200 triple +



# Manual

**devolo**  
The Network Innovation

---

devolo dLAN<sup>®</sup> 1200 triple+

## © 2016 devolo AG Aachen (Germany)

While the information in this manual has been compiled with great care, it may not be deemed an assurance of product characteristics. devolo shall be liable only to the degree specified in the terms of sale and delivery.

The reproduction and distribution of the documentation and software supplied with this product and the use of its contents is subject to written authorisation from devolo. We reserve the right to make any alterations that arise as the result of technical development.

### Trademarks

Android™ is a registered trademark of the Open Handset Alliance.

Linux® is a registered trademark of Linus Torvalds.

Ubuntu® is a registered trademark of Canonical Ltd.

Mac® and Mac OS X® are registered trademarks of Apple Computer, Inc.

iPhone®, iPad® and iPod® are registered trademarks of Apple Computer, Inc.

Windows® and Microsoft® are registered trademarks of Microsoft Corp.

Wi-Fi®, Wi-Fi Protected Access™, WPA™, WPA2™ and Wi-Fi Protected Setup™ are registered trademarks of the Wi-Fi Alliance®.

devolo, dLAN®, Vianect® and the devolo logo are registered trademarks of devolo AG.

All other names mentioned may be trademarks or registered trademarks of their respective owners. Subject to change without notice. No liability for technical errors or omissions.

### devolo AG

Charlottenburger Allee 67

52068 Aachen

Germany

[www.devolo.com](http://www.devolo.com)

Aachen, July 2017

Version: 1.0

# Contents

<b>1</b>	<b>Preface</b>	<b>5</b>
1.1	About this manual	5
1.1.1	Intended use	7
1.1.2	CE conformity	7
1.1.3	Safety notes	7
1.2	devolo on the Internet	8
<b>2</b>	<b>Introduction</b>	<b>9</b>
2.1	What exactly is dLAN?	9
2.2	The dLAN 1200 triple+	10
2.2.1	Encryption button	10
2.2.2	Network jacks	11
2.2.3	Integrated electrical socket	11
<b>3</b>	<b>Initial use</b>	<b>12</b>
3.1	Package contents	12
3.2	System requirements	12
3.3	Connecting the dLAN 1200 triple+	13
3.3.1	Starter Kit and addition – Setting up a new dLAN network	13
3.3.2	Addition – Expanding an additional network	14
3.4	Removing a dLAN 1200 triple+ from the network	16
<b>4</b>	<b>Network configuration</b>	<b>17</b>
4.1	Security in the dLAN	17
4.2	dLAN network encryption at the touch of a button	17
4.3	devolo Cockpit	19
4.4	Installation of devolo software	20
4.5	Activate encryption by means of devolo Cockpit	23

<b>5</b>	<b>Annex</b>	<b>25</b>
5.1	Technical data	25
5.2	Bandwidth optimisation	25
5.3	Disposal of old devices	26
5.4	Warranty conditions	27

# 1 Preface

*Thank you for placing your trust in this devolo product.*

*In just a few easy steps, you can set up your own network with the dLAN 1200 triple+. devolo dLAN adapters transmit the Internet data over the household electrical wiring, making every electrical socket a network access point.*





## 1.1 About this manual




Carefully read all safety and operating instructions before setting up the device and store the manual and installation guide for later reference.



After a brief introduction to the dLAN® topic and an introduction to the dLAN 1200 triple+ in **Chapter 2**, **Chapter 3** will teach you how to start using the adapter effectively in your network. **Chapter 4** describes the configuration options for the integrated configuration interface in detail. Tips for bandwidth optimisation, information about product safety and environmental compatibility of the device, as well as our warranty terms, can be found in **Chapter 5** at the end of the manual.

## Icons

This section contains a brief description of the icons used in this manual and/or on the rating plate, the device connector, as well as the icons used on the package:

Icon	Description
	Very important safety symbol that warns you of imminent electrical voltage which if not observed can result in serious injury or death.
	An important safety symbol that warns you of a potentially dangerous situation involving a burn hazard which can result in minor injuries or damage to property.
	An important note that should be observed which can potentially lead to material damages.
	The device may only be used indoors in dry conditions.

Icon	Description
	The device is a Class I product. All electrically conductive (made of metal) housing parts where a voltage can be applied during operation or maintenance in the event of an error must be continuously connected to the earth wire.
	The manufacturer/distributing company uses the CE marking to declare that the product meets all applicable European regulations and has been subjected to the prescribed conformity assessment procedures.
	It is used to prevent the occurrence of waste electrical and electronic equipment and to reduce this type of waste through reuse, recycling and other forms of utilisation. It establishes minimum standards for handling waste electrical and electronic equipment in the EU.

Icon	Description
	Additional information, background material and configuration tips for your device.
	Indicates a completed course of action

### 1.1.1 Intended use

Use the adapter as described in these instructions to prevent damage and injuries.



#### **DANGER!**

Electric shock caused by electricity

The device must be plugged into a power socket with a connected earth wire



#### **CAUTION!**

Damage to the device caused by ambient conditions

Only use device indoors in dry conditions

### 1.1.2 CE conformity



The product conforms to the basic requirements of **directives 2014/53/EU, 2014/35/EU** and the other relevant requirements of the Radio and Telecommunications Terminal Equipment Act (FTEG).

***The product is intended for operation in the EU, Switzerland and Norway.***

The product is a Class B device.

- *A printout of the CE declaration is included with the product. You can also find it online at [www.devolo.com](http://www.devolo.com).*

### 1.1.3 Safety notes

It is essential to have read and understood all safety and operating instructions before the devolo device is used for the first time; keep them safe for future reference.



#### **DANGER!**

Electrical shock caused by electricity  
Do not reach into the electrical socket, do not open the device and do not insert any objects into the electrical socket or into the ventilation openings

Users do not need to carry out any maintenance on devolo devices. In the event of damage, disconnect the devolo device from the mains supply by pulling it or its plug out of the electrical socket. Then contact qualified specialist personnel (after-sales service) exclusively. **Damage** is deemed to have occurred, for example,

- if the power plug is damaged.
- if the devolo device has been showered with liquid (such as rain or other water).
- if the devolo device is inoperable.
- if the housing of the devolo device is damaged.

- *Do not plug devolo devices directly into each other. Devices that are plugged into each other can experience a decrease in transmission rate.*



**DANGER!**

Electric shock caused by electricity  
The device must be plugged into a power socket with a connected earth wire

devolo devices may be operated only on a mains power supply as described on the **rating plate**.

To disconnect devolo devices from the mains supply, unplug the device itself or its power plug from the electrical socket.

The power socket and all connected network devices should be easily accessible so that you can pull the power plug quickly if needed.

**CAUTION!**

Heat development during operation  
Certain housing components can become very hot in certain situations. Attach device so that it is touch-proof, observing optimal positioning

devolo devices should only be installed at locations that guarantee adequate ventilation. Slots and openings on the housing are used for ventilation:

- **Do not cover** devolo devices during operation.
- Do not place **any objects on** devolo devices.
- Do not insert **any objects** into the **openings** of devolo devices.
- devolo devices must **not** be placed directly **next to a naked flame** (such as fire or candles).
- devolo devices must **not be exposed to direct heat radiation** (e.g. radiator, direct sunlight).

**CAUTION!**

Damage to housing from cleaning agents containing solvents  
Clean only with dry cloth

**Disconnect the devolo device from the mains supply to clean!**

## 1.2 devolo on the Internet

For detailed information on our products and dLAN, visit [www.devolo.com](http://www.devolo.com). The **Powerline** area not only contains product descriptions and documentation, but also updates of devolo software and your device's firmware.

If you have any further ideas or suggestions related to our products, please don't hesitate to contact us at [support@devolo.com](mailto:support@devolo.com)!

## 2 Introduction

**dLAN** is an intelligent, secure technology that lets you set up a home network easily, quickly and economically via your household electrical wiring, without the need for complex and expensive dedicated cabling.



Fig. 1 devolo dLAN throughout the home

### 2.1 What exactly is dLAN?

The dLAN (**d**irect **L**ocal **A**rea **N**etwork) uses the household power grid to transfer data between computers and other network components equipped with suitable adapters. As a result, any electrical socket can be used as a network access point. The data is modulated prior to transfer and sent as a signal via household power lines. State-of-the-art technology ensures that the power and data networks do not interfere with one another. Networking via dLAN is fast and secure. The data is encrypted using a key to prevent interception by third parties.

## 2.2 The dLAN 1200 triple+

The dLAN 1200 triple+ is equipped with

- three gigabit network connectors,
- one dLAN indicator light,
  - *The LED status display can be deactivated with the devolo Cockpit-Software (see 4.3 devolo Cockpit).*
- an encryption button with reset function (next to the network connectors),
- One integrated electrical socket.



Fig. 2 dLAN 1200 triple+ with country-specific connector and corresponding electrical socket

### 2.2.1 Encryption button

This button has the following functions:

#### Encrypting the dLAN network

- To encrypt your dLAN network individually, press **each encryption button** on the connected devices within 2 minutes, for approximately **1 second** each.
- To remove a dLAN device from your network, press the **encryption button** on the corresponding device and hold **for at least 10 seconds**.

#### Reading the dLAN indicator light

The integrated indicator light (**LED**) shows the dLAN status for the dLAN 1200 triple+ by illuminating and/or flashing:

- *Check whether the adapter is connected to the mains supply correctly and whether the encryption process has been carried out successfully. For more information about this, refer to 3.3 Connecting the dLAN 1200 triple+.*

## Flashing behaviour of the dLAN LED

LED	Flashing behaviour	Meaning
Red LED	Flashes at intervals of <b>0.5 sec.</b> (on/off)	No dLAN connection exists
Red LED	Flashes at intervals of <b>2 sec.</b> (on/off)	Data transmission rate not in optimum range *
White LED	Lights up steady	An encrypted dLAN connection exists and the adapter is ready to operate
White LED	Flashes at intervals of <b>0.5 sec.</b> (on/off)	dLAN encryption being established

LED	Flashing behaviour	Meaning
White LED	Flashing at intervals of <b>0.5/50-60 sec.</b> (On/off)	Adapter is in PowerSave mode

\* For information on improving transmission rate, refer to Chapter **5.2 Bandwidth optimisation**.

## 2.2.2 Network jacks

Using the three network connectors of the dLAN 1200 triple+, you can connect a computer, a game console and your television to the dLAN 1200 triple+ using a commercially available network cable.

## 2.2.3 Integrated electrical socket

To connect other network devices to your mains supply, use the electrical socket of the dLAN 1200 triple+. The mains filter integrated into the dLAN 1200 triple+ eliminates any noise of connected devices and significantly improves data transmission in the network.

## 3 Initial use

This chapter tells you everything you need to know to set up and use your dLAN 1200 triple+. We describe how to connect the adapter and briefly describe the devolo software. Further, detailed information is available at [www.devolo.com](http://www.devolo.com).

### 3.1 Package contents

Please ensure that the delivery is complete before beginning with the installation of your dLAN 1200 triple+.

- **Starter Kit:**
  - dLAN 1200 triple+
  - dLAN 1200+
  - Two network cables
  - Hard copy of installation guide
  - CE declaration

or

- **Extension:**
  - dLAN 1200 triple+
  - Network cable

- Hard copy of installation guide
- CE declaration

devolo AG reserves the right to change the package contents without prior notice.

### 3.2 System requirements

- **Supported operating systems of the devolo Cockpit:** Windows 7 (32 bit/64 bit), Windows 8 (32 bit/64 bit), Windows 8 Pro (32 bit/64 bit), Windows 10 (32 bit/64 bit), Windows 10 Pro (32 bit/64 bit), Ubuntu Linux (32 bit/64 bit), Mac (from OS X 10.6)

- **Network connection**

■ *Please note that your computer or other device must have a network adapter with a network port.*

*To set up a dLAN network, you need at least two dLAN devices (200 Mbps, 500 Mbps, 600 Mbps or 1200 Mbps).*

### 3.3 Connecting the dLAN 1200 triple+



#### CAUTION!

Damage to the device caused by ambient conditions

Only use device indoors in dry conditions

In the following sections we describe how to connect the dLAN 1200 triple+ and integrate it into the network. We clarify the exact procedures based on potential network scenarios.

■ *For the permitted voltage range for operating the device and the power consumption, refer to the label on the rear of the device. For additional technical information on our products, refer to the Service Centre area at [www.devolo.com](http://www.devolo.com).*

#### 3.3.1 Starter Kit and addition – Setting up a new dLAN network

- ① Connect the dLAN 1200+ to your Internet access device's network jack (e.g. WiFi router).



#### CAUTION!

Tripping hazard

Lay the network cable in a barrier-free manner and ensure that the electrical socket and the connected network devices are easily accessible

- ② Plug the dLAN 1200 triple+ into a wall socket. As soon as the LED indicator light flashes red at regular intervals of **0.5 sec.**, the adapter is ready to operate but not yet integrated into the dLAN network.

#### Connecting the dLAN 1200+ and dLAN 1200 triple+ to a dLAN network

Before you can use the adapter in a dLAN network, first you have to connect it as a network. This is accomplished by using a shared dLAN password. This forms a delimited dLAN network. Shared use of the dLAN password serves both as access control to the dLAN network as well as the encryption, and thereby the interception protection, of the transmitted data.

The dLAN password can be set in different ways:

### **dLAN network encryption at the touch of a button**

- ③ **First** press the encryption button of the **dLAN 1200+** for approx. **1 second**, and **then within 2 minutes** press the encryption button of the **dLAN 1200 triple+** for approx. **1 second**.



As soon as the indicator lights light up white on both devices, your dLAN network is set up and protected from unauthorised access.

or

### **dLAN network encryption by entering the dLAN password in the devolo Cockpit**

More information can be found in Chapter **4.3 devolo Cockpit**.

## **3.3.2 Addition – Expanding an additional network**

- ① Plug the dLAN 1200 triple+ into a wall socket. As soon as the LED indicator light flashes red at regular intervals of **0.5 sec.**, the adapter is ready to operate but not yet integrated into the dLAN network.

### **Integrating the dLAN 1200 triple+ into an existing dLAN network**

Before you can use the dLAN 1200 triple+ in your dLAN network, first you have to connect it to your existing dLAN devices as a network. This is accomplished by using a shared dLAN password. The dLAN password can be set in different ways:

### **dLAN network encryption at the touch of a button**

- ② **First** press the encryption button on a device in your existing network for approx. **1 second** and **within 2 minutes**, press the encryption button of the new dLAN 1200 triple+ for approx. **1 second**.



The new dLAN 1200 triple+ is now integrated into your existing, encrypted dLAN network.

or

### **dLAN network encryption by entering the dLAN password in the devolo Cockpit**

More information can be found in Chapter **4.3 devolo Cockpit**.

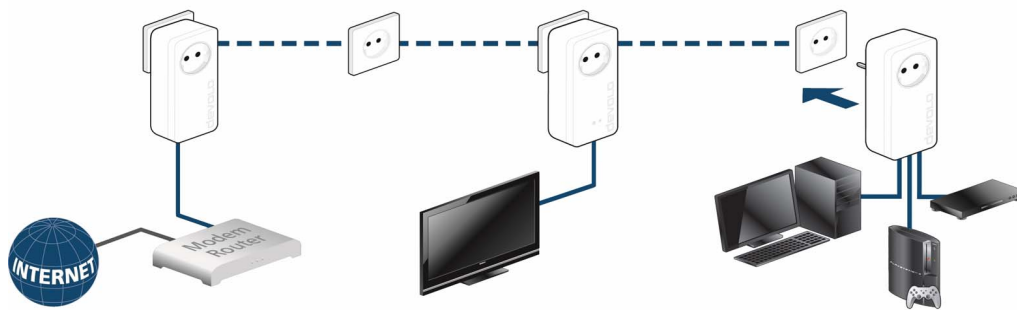


Fig. 3 Setting up a dLAN network



### 3.4 Removing a dLAN 1200 triple+ from the network

To remove a dLAN 1200 triple+ adapter from an existing network, press the encryption button on the corresponding adapter for **at least 10 seconds**. The adapter will automatically be assigned a new randomly

generated password and will thus no longer be able to access the network. To integrate the device into a different network after this, follow the steps described in Chapter **3.3 Connecting the dLAN 1200 triple+**, depending on whether you are setting up a new network or adding the device to an existing one.

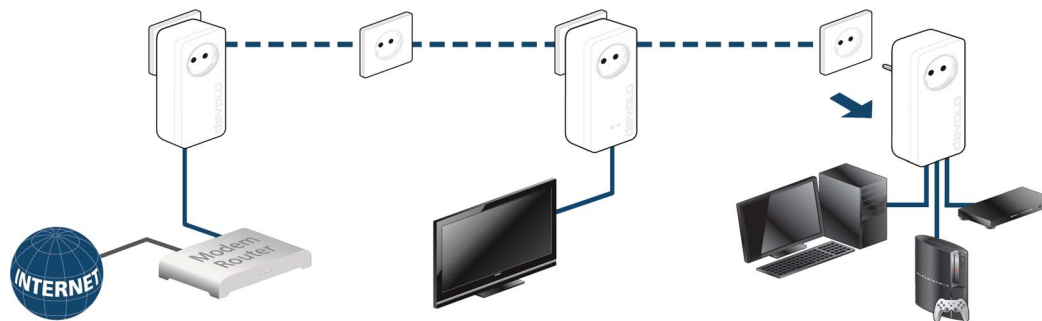


Fig. 4 Removing a dLAN adapter

## 4 Network configuration

### 4.1 Security in the dLAN

Before you can use the dLAN 1200 triple+ in your dLAN network, you must first connect it to other dLAN devices as a network. Two specific pieces of information are especially important for this:

- The joint use of the dLAN password is for access control purposes; it results in a delimited dLAN network.
- The joint use of the dLAN password is for network encryption purposes, protecting against interception of the transmitted data.

The dLAN password can be specified automatically by means of the **encryption button** or manually using the **devolo Cockpit** program. Please note the following basic principle when choosing your encryption method:

- For dLAN networks in which **all associated dLAN devices are equipped with an encryption button**, a dLAN password can be easily generated at the **touch of a button**.
- For dLAN networks that include a combination of devices **with and without encryption but-**

**tons**, the password **must** be specified with the **devolo Cockpit**.

### 4.2 dLAN network encryption at the touch of a button

To encrypt a dLAN network in which all associated devices are equipped with an encryption button, simply press the encryption button located on the device. Pressing this button will encrypt your dLAN network with a randomly generated password.



Fig. 5 dLAN encryption by means of an encryption button

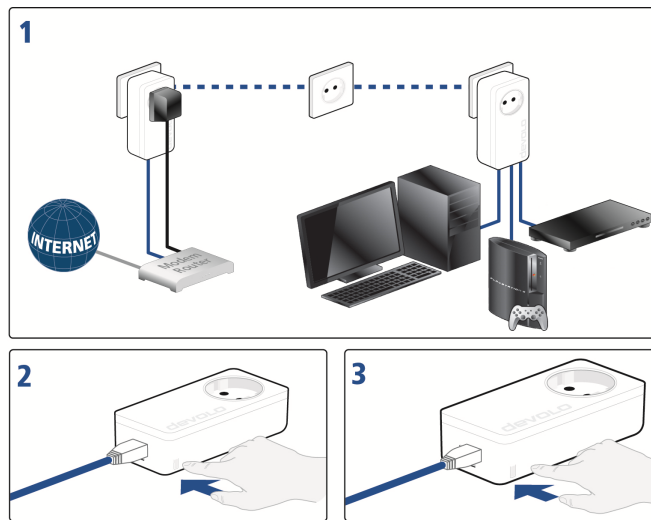


Fig. 6 Setting up dLAN encryption by means of the encryption button

## 4.3 devolo Cockpit

The **devolo Cockpit** is a monitoring program that detects all accessible dLAN devices in your home network and combines them into one secure network.

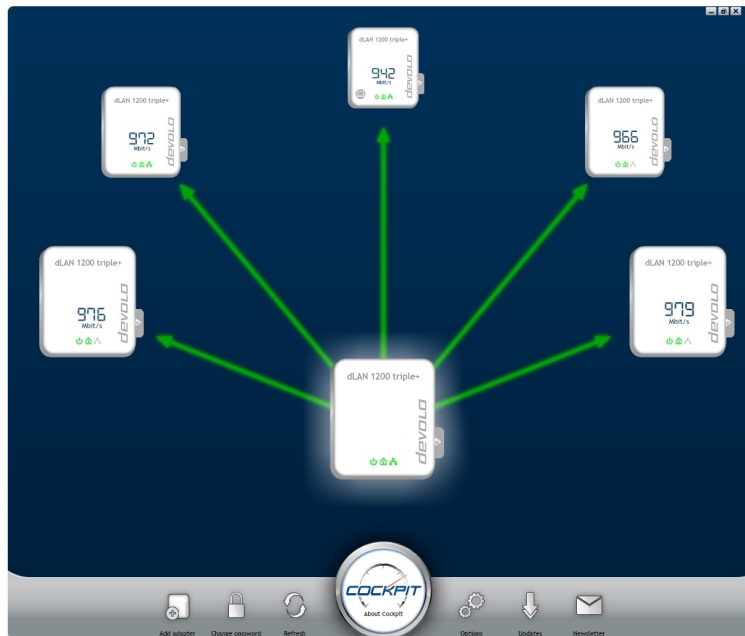


Fig. 7 The devolo Cockpit in action

## 4.4 Installation of devolo software

### Downloading my devolo App

The **my devolo App** is devolo's **free app** also for checking and configuring WiFi, dLAN and LAN connections for the dLAN 1200 triple+ (via smartphone or tablet). The smartphone or tablet connects to the dLAN 1200 triple+ at home via **WiFi**.

- ① Download the **my devolo App** to your smartphone or tablet computer from the corresponding store.
  - *The quickest way to find the app is by clicking the magnifying glass in the store and searching directly for **devolo**.*
- ② **my devolo App** is placed in your smartphone's or tablet's app list as usual. Tapping on the **my devolo App** icon brings you to the start menu.
  - *You can find more information about my devolo App online at [www.devolo.co.uk/service/my-devolo-app/](http://www.devolo.co.uk/service/my-devolo-app/).*

### Installing devolo Cockpit software

The **devolo Cockpit** computer program finds all accessible dLAN adapters in your dLAN network, displays information about these devices and encrypts your dLAN network individually. For WiFi devices, the software takes you to the configuration interface to configure your **WiFi network** on a computer.

#### Software

The **devolo Cockpit** software is available at [www.devolo.com/cockpit](http://www.devolo.com/cockpit) for the following operating systems:

- Windows (from Win 7, 32 bit/64 bit)
- Mac (from OS X 10.6)
- Ubuntu Linux (32 bit/64 bit)
- *You can find more information about the devolo Cockpit software online at [www.devolo.com/cockpit](http://www.devolo.com/cockpit).*

### Starting devolo Cockpit software

All accessible dLAN devices in your home network appear after starting the **devolo Cockpit**. This may take a moment.

All adapters found in the network appear as an icon with a corresponding product name. The adapter displayed in the middle of the dLAN network symbolises the devices connected to the computer. The **devolo Cockpit** also offers you the option to centre the display of the adapter connected to the router. If you have multiple dLAN devices connected, you can switch between them. Clicking an adapter icon highlights the corresponding dLAN device.

The coloured connecting lines between the adapters illustrate the current transmission quality:

- **Green:** the network connection is suitable for HD video streaming.
- **Orange:** the network connection is suitable for SD video streaming and online gaming.
- **Red:** the network connection is suitable for simple data transfer and Internet access.

If data transmission from one adapter to another is in fact taking place, the outgoing data rate from the centred adapter is displayed. If a different adapter is selected, the data rate outgoing from this adapter is displayed.

### Settings and functions

You can configure settings for the respectively highlighted device or for the network

- via the buttons at the lower edge of the screen (**Network settings**)
- and using the tabs positioned on the side of each adapter (**Adapter settings**).

## devolo Cockpit setting options on the lower edge of the screen:



You can add a new dLAN adapter to your present network using **Add adapter**. Follow the instructions on the screen to connect the dLAN adapters to each other.



You can replace the default password with your own password using **Change password**. This is valid for your entire dLAN network. In addition, you can also generate a secure password here.



The newly integrated dLAN adapter will be detected by means of **Refresh** and displayed in the Cockpit interface.



You can use **Options** to select whether you would like the transmission capacity of the connected dLAN adapter to be recorded and sent to devolo. Here, you can also disable all future updates for your adapter and reset the entire dLAN network to the factory defaults. A troubleshooting guide provides remedies for bandwidth problems. The option to centre the **devolo Cockpit** on the dLAN adapter that is connected to the router results in a clearer arrangement of all dLAN adapters.

**I** The data sent to devolo pertains only to the performance values of your dLAN devices. The information is anonymised, statistically evaluated and used exclusively for the improvement of our products.



The **devolo Cockpit** checks if a new firmware version is available for the integrated dLAN adapter using **Updates**. These can then be installed automatically.



**Newsletter** takes you to the devolo website, where you can sign up to receive our free newsletter.

## Configuration options on the tabs positioned on the side:



The **FAQ display** button takes you to the devolo website. Here you can find useful information, as well as some tips and tricks related to the product.



You can find out device information, such as the firmware version used and the specific MAC address, using the **Display Options** button.

Furthermore, other options are available, such as the following:

- Turn off LEDs,
  - Disable data communication,
  - Activate/ deactivate power saving mode,
  - Assign device names,
  - Reset device to factory defaults
- and
- View manual for the dLAN device



The selected dLAN adapter can be removed from the available dLAN network using **Remove Device**.

*The above-mentioned setting options vary depending on the function and features of your device.*

*Error states of the adapter are displayed even though the LED is switched off.*

## 4.5 Activate encryption by means of devolo Cockpit

If you are using dLAN devices **without encryption buttons**, encryption can only take place through **devolo Cockpit**.

*Before the networking procedure, note the security IDs of all dLAN adapters. This unique identifier of each dLAN device can be found on the rating plate on the housing. It consists of 4 x 4 letters separated by dashes (e.g. ANJR-KMOR-KSHT-QRUV). Ensure that all dLAN adapters are connected to the mains supply and computers or other network components as appropriate.*

### Scan for local adapter

After **devolo Cockpit** is started, it starts by searching for the dLAN adapter connected directly to your computer.

### Adding an adapter

Add all the dLAN devices you want to your dLAN network by selecting the **Add** button. You will need the **16 digit security ID** of the adapter, which can be found on the label on the rear side of the housing. Enter it now into the **Security ID** field and confirm with **OK**. If a security ID is correct and the device can



be reached in the dLAN network, it will be added to your network and displayed in the program.

### Changing the network password

After you have added all desired dLAN devices to your dLAN network, select the **Change Password** button to assign a **new** joint network password. All adapters present in your dLAN network are updated with the new password automatically.

You can choose between your own password or a random password. To define your own password, enter it into the **Network password** text field (8 character minimum). Alternatively, you can have a randomly selected and highly secure password assigned using the **Generate secure password** button. All present adapters in your dLAN network will receive the new password automatically.

- *The entered or automatically created password can be shown in the text field in readable form by activating the option "Show characters".*

If **devolo Cockpit** is called up again later after a successful initial installation, for example to **integrate** a **new adapter** into a network, the application remembers the devices that were entered earlier. Enter the new device as described in the **Adding an adapter**

section. The **current network password** is assigned **automatically** to the newly added device.

## 5 Annex

### 5.1 Technical data

Security	128 Bit AES
Max. power output to integrated socket	Plug-Type E: 16 A / 3500 W Plug-Type F: 16 A / 3600 W Plug-Type G: 13 A / 3000 W Plug-Type J: 10 A / 2300 W
Device port	3x Ethernet RJ45
Power consumption	Maximum: 4,6 W Typical: 3,7 W Stand-by: 0,8 W
Power supply	internal 196-250 V AC 50 Hz
Attenuation filter	2 – 68 MHz
Filter characteristics	-22 db to -45 db
Temperature (Storage/ Operating)	-25°C to 70 °C / 0°C to 40°C
Dimensions (in mm, with- out plug)	143x72x41 (HxWxD)
Ambient conditions	10-90% Humidity, non-con- densing
Certifications	CE Class B (EU, CH, NO)

### 5.2 Bandwidth optimisation

To significantly improve the transmission capacity of the network, we recommend that you comply with the following "connection rules":

- Plug the dLAN 1200 triple+ directly into a wall socket.
- Avoid using a power strip. This may impair the transmission of the dLAN signals.

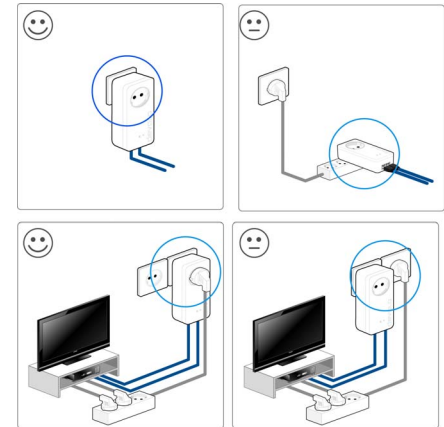


Fig. 8 dLAN bandwidth optimisation

- If there are several sockets in the wall directly next to each other, they behave like a power strip. Individual sockets are optimal.

### 5.3 Disposal of old devices

To be used in the countries of the European Union and other European countries with a separate collecting system:



The icon with crossed-out wastebasket on the device means that this product is an electrical or electronic device that falls within the scope of application of the European Community WEEE Directive. These types of devices may no longer be disposed of with household waste. Rather they can be given to a municipal collection point free of charge. Contact your municipal government to find out the address and hours of the nearest collection point.

## 5.4 Warranty conditions

The devolo AG warranty is given to purchasers of devolo products in addition to the warranty conditions provided by law and in accordance with the following conditions:

### 1 Warranty coverage

- a) The warranty covers the equipment delivered and all its parts. Parts will, at devolo's sole discretion, be replaced or repaired free of charge if, despite proven proper handling and adherence to the operating instructions, these parts became defective due to fabrication and/or material defects. Alternatively, devolo reserves the right to replace the defective product with a comparable product with the same specifications and features. Operating manuals and possibly supplied software are excluded from the warranty.
- b) Material and service charges shall be covered by devolo, but not shipping and handling costs involved in transport from the buyer to the service station and/or to devolo.
- c) Replaced parts become property of devolo.
- d) devolo is authorized to carry out technical changes (e.g. firmware updates) beyond repair and replacement of defective parts in order to bring the equipment up to the current technical state. This does not result in any additional charge for the customer. A legal claim to this service does not exist.

### 2 Warranty period

The warranty period for this devolo product is three years. This period begins at the day of delivery from the devolo dealer. Warranty services carried out by devolo do not result in an extension of the warranty period nor do they initiate a new warranty period. The warranty period for installed replacement parts ends with the warranty period of the device as a whole.

### 3 Warranty procedure

- a) If defects appear during the warranty period, the warranty claims must be made immediately, at the latest within a period of 7 days.
- b) In the case of any externally visible damage arising from transport (e.g. damage to the housing), the person carrying out the transportation and the sender should be informed immediately. On discovery of damage which is not externally visible, the transport company and the sender are to be immediately informed in writing, at the latest within 3 days of delivery.
- c) Transport to and from the location where the warranty claim is accepted and/or the repaired device is exchanged, is at the purchaser's own risk and cost.
- d) Warranty claims are only valid if a copy of the original purchase receipt is returned with the device. devolo reserves the right to require the submission of the original purchase receipt.

### 4 Suspension of the warranty

All warranty claims will be deemed invalid

- a) if the label with the serial number has been removed from the device,
- b) if the device is damaged or destroyed as a result of acts of nature or by environmental influences (moisture, electric shock, dust, etc.),
- c) if the device was stored or operated under conditions not in compliance with the technical specifications,
- d) if the damage occurred due to incorrect handling, especially to non-observance of the system description and the operating instructions,
- e) if the device was opened, repaired or modified by persons not contracted by devolo,
- f) if the device shows any kind of mechanical damage, or
- g) if the warranty claim has not been reported in accordance with 3a) or 3b).

## 5 Operating mistakes

If it becomes apparent that the reported malfunction of the device has been caused by unsuitable hardware, software, installation or operation, devolo reserves the right to charge the purchaser for the resulting testing costs.

## 6 Additional regulations

The above conditions define the complete scope of devolo's legal liability.

- a) The warranty gives no entitlement to additional claims, such as any refund in full or in part. Compensation claims, regardless of the legal basis, are excluded. This does not apply if e.g. injury to persons or damage to private property are specifically covered by the product liability law, or in cases of intentional act or culpable negligence.
- b) Claims for compensation of lost profits, indirect or consequential detriments, are excluded.
- c) devolo is not liable for lost data or retrieval of lost data in cases of slight and ordinary negligence.
- d) In the case that the intentional or culpable negligence of devolo employees has caused a loss of data, devolo will be liable for those costs typical to the recovery of data where periodic security data back-ups have been made.
- e) The warranty is valid only for the first purchaser and is not transferable.
- f) The court of jurisdiction is located in Aachen, Germany in the case that the purchaser is a merchant. If the purchaser does not have a court of jurisdiction in the Federal Republic of Germany or if he moves his domicile out of Germany after conclusion of the contract, devolo's court of jurisdiction applies. This is also applicable if the purchaser's domicile is not known at the time of institution of proceedings.
- g) The law of the Federal Republic of Germany is applicable. The UN commercial law does not apply to dealings between devolo and the purchaser.

# Index

## C

CE 7

## D

dLAN 9

dLAN network 17

dLAN password 17

## G

Generating a secure password 24

## I

Integrating the new adapter into the network 24

## L

LAN (network connection) 11

LED status display 10

## N

Network password 24

## P

Package contents 12

## S

Safety notes 7

Security ID 23

System requirements 12