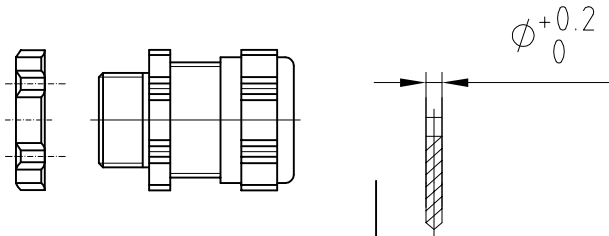




Raum für Verpackungsdatum
Area for date of packing
(MMJJTT / MMYDD)

SZ

| | |
|----------|----------|
| 2411.601 | 2411.641 |
| 2411.611 | 2411.651 |
| 2411.621 | 2411.661 |
| 2411.631 | 2411.671 |

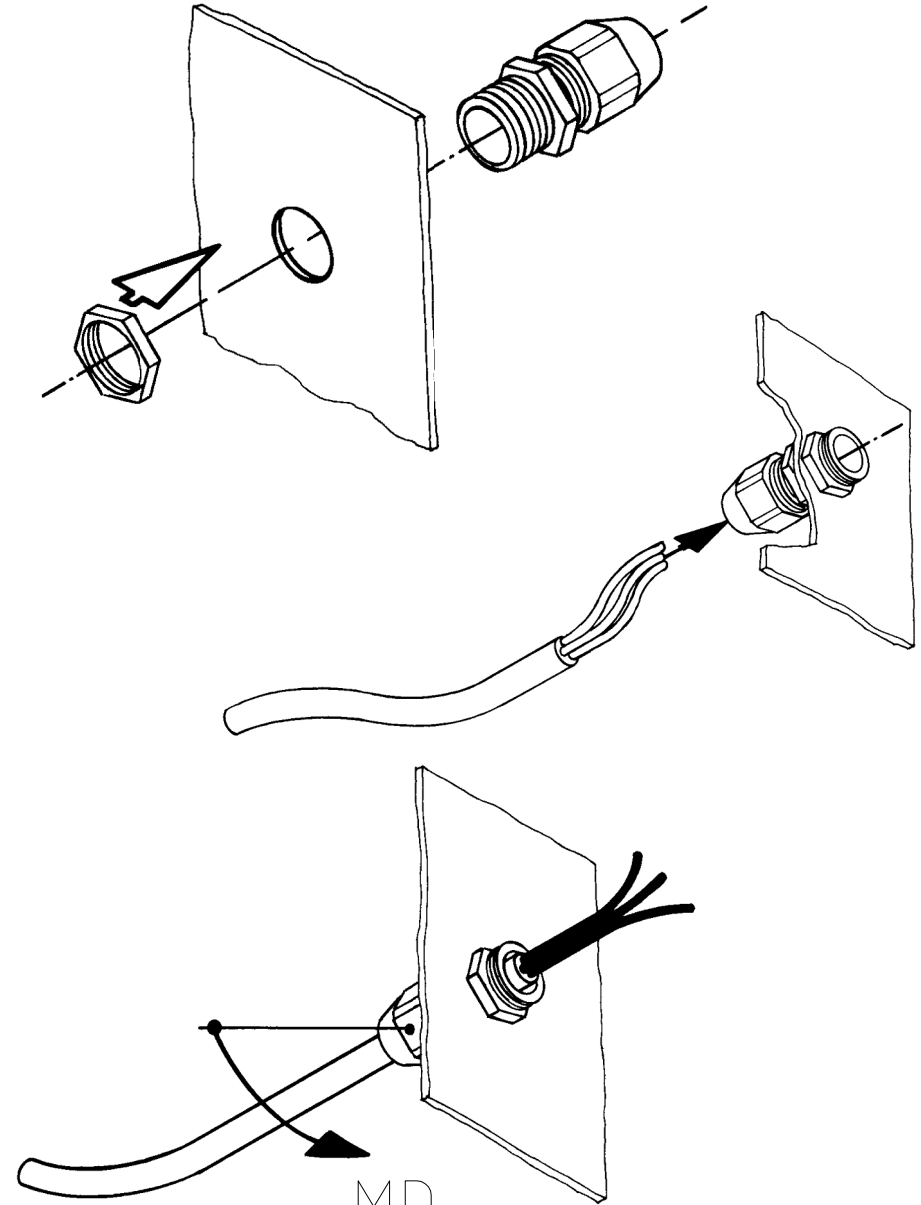


| | | |
|----------|-------------|------|
| 2411.601 | 50x M12x1,5 | 12,0 |
| 2411.611 | 50x M16x1,5 | 16,0 |
| 2411.621 | 50x M20x1,5 | 20,0 |
| 2411.631 | 25x M25x1,5 | 25,0 |
| 2411.641 | 15x M32x1,5 | 32,0 |
| 2411.651 | 5x M40x1,5 | 40,0 |
| 2411.661 | 5x M50x1,5 | 50,0 |
| 2411.671 | 3x M63x1,5 | 64,0 |

Zchn.-Nr. / No. of dwg. : A06945400SZ

Versandbeutel-Nr. / No. of accessory bag :

Lieferanten-Nr. / No. of supplier :



MD

siehe/see: www.rittal.com