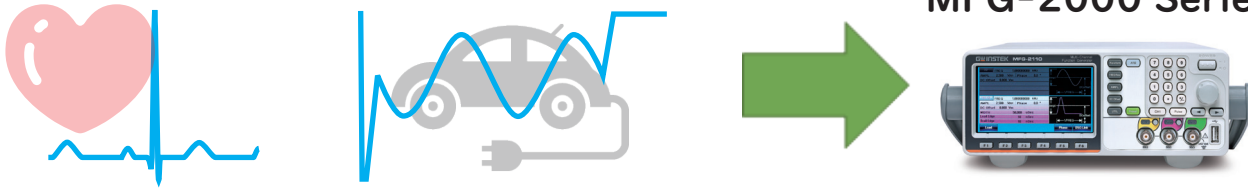


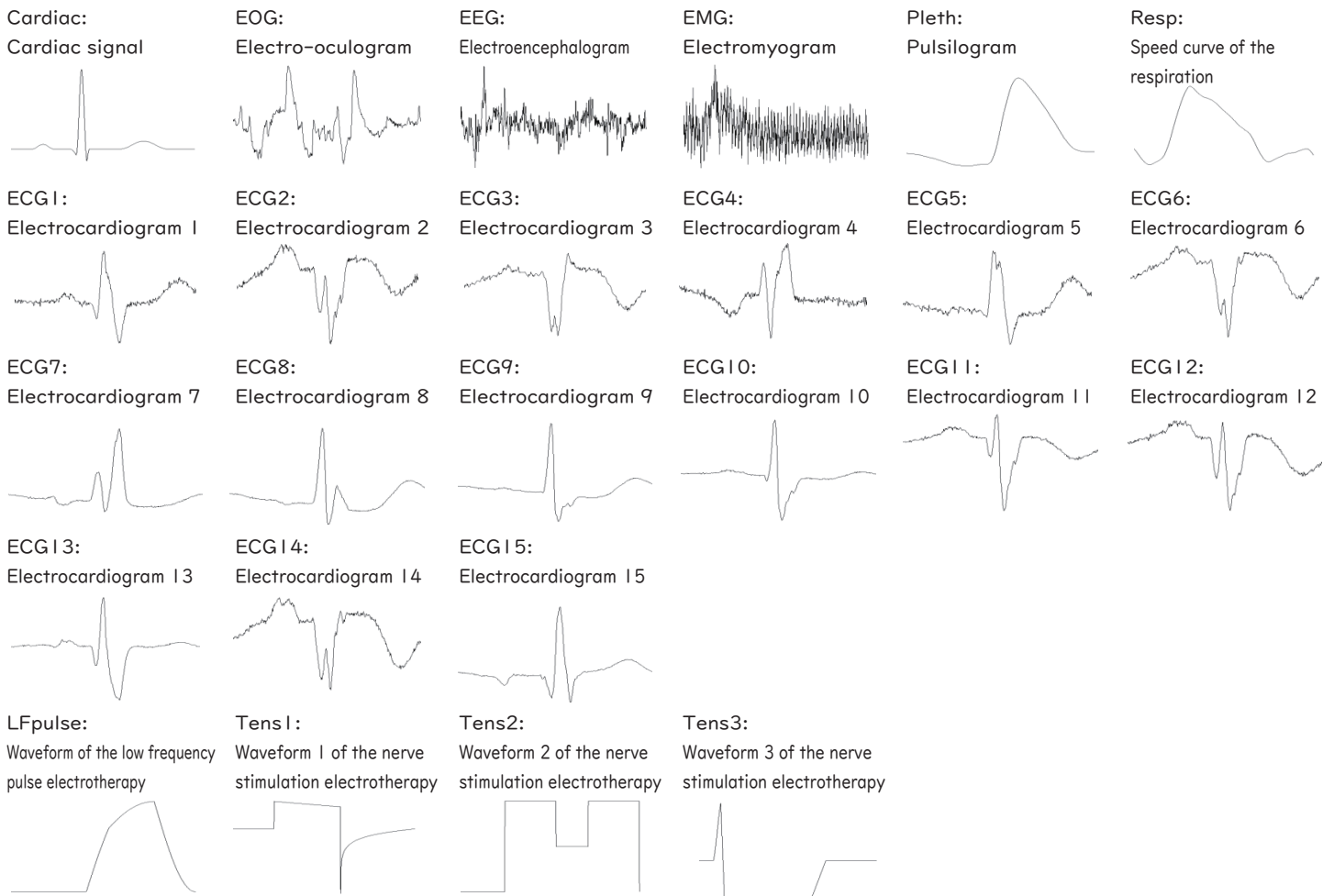
## The medical and Autoelectro-Relevant waveforms

### MFG-2000 Series

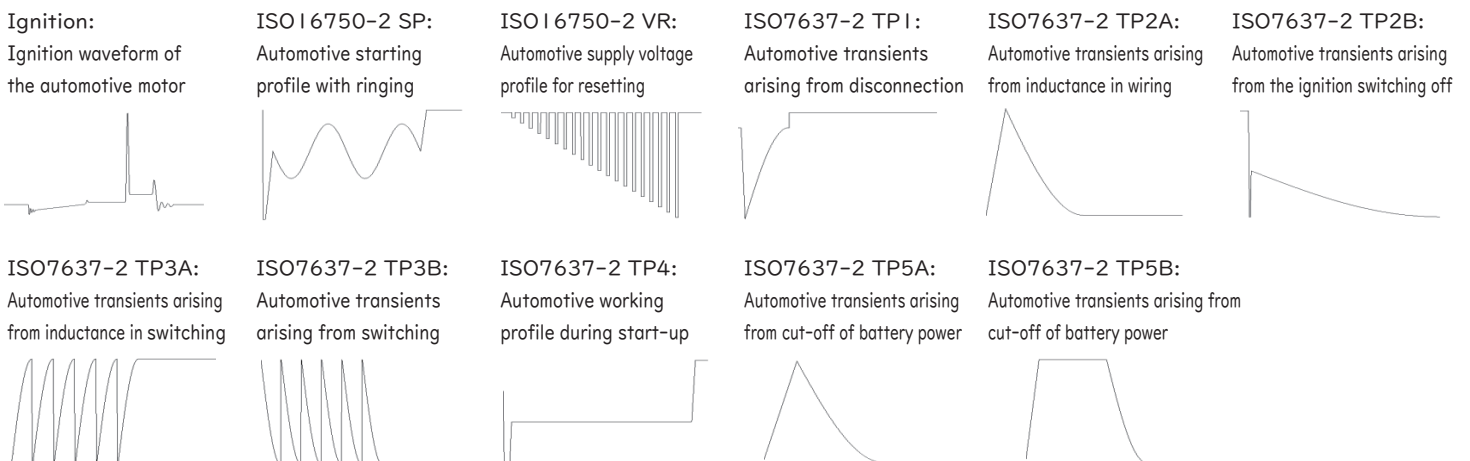


The Medical waveform and Autoelectro-Relevant Waveforms has been added to the built-in arbitrary waveform of the MFG-2000 series. After updating to firmware 2.04 or later, 36 types of medical and Autoelectro-Relevant waveforms can be added to the built-in data of arbitrary waveforms.

#### ARB Built-In Medical Waveforms



#### ARB Built-In Autoelectro-Relevant Waveforms



## MFG-2000 Series

### ✓ MFG-2000 series specific functions

#### MFG-21XXSeries:

##### 1 Channel



#### MFG-22XXSeries:

##### 2 Channel

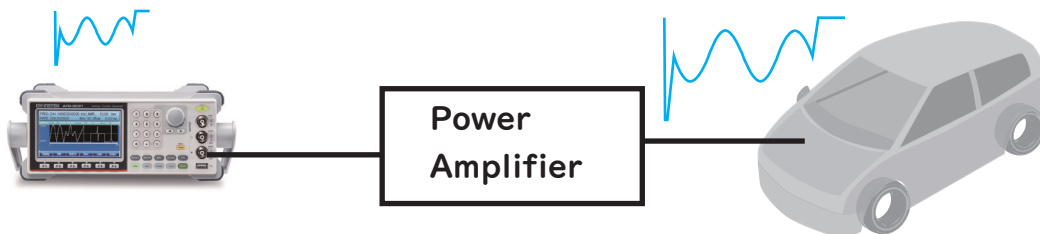


	CH1 Function With ARB	CH2 Function With ARB	25MHz Pulse Generator	RF Generator (Function With ARB)	Power Amplifier	Modulation /Sweep/Burst/ Frequency Counter
MFG-2110	● 10MHz		●			
MFG-2120	● 20MHz		●			
MFG-2120MA	● 20MHz		●		●	●
MFG-2130M	● 30MHz		●			●
MFG-2160MF	● 60MHz		●	● 160MHz		●
MFG-2160MR	● 60MHz		●	● 320MHz		●
MFG-2230M	● 30MHz	● 30MHz	●			●
MFG-2260M	● 60MHz	● 60MHz	●			●
MFG-2260MFA	● 60MHz	● 60MHz	●	● 160MHz	●	●
MFG-2260MRA	● 60MHz	● 60MHz	●	● 320MHz	●	●

### ✓ Arbitrary Functions

ARB function	Built-in 102 waveforms
Maximum Sample Rate	200 MSa/s
Maximum Repetition Rate	100MHz
Waveform Length	16k points
Amplitude Resolution	14 bits
Non-Volatile Memory	16k points(1) , 10 sets,
User-defined output section	From 2 point to 16384 point
User-defined output marker section	From 2 point to 16384 point
Output mode	1 to 1048575 cycles or infinite mode

### ● Example: Autoelectro-Relevant Waveforms



Ignition and  
ISO16750-2  
waveform

#### The NEW built-in Arbitrary waveforms:

##### ✓ Medical:

Cardiac, EOG, EEG, EMG, Pleht, Resp, ECG1, ECG2, ECG3, ECG4, ECG5, ECG6, ECG7, ECG8, ECG9, ECG10, ECG11, ECG12, ECG13, ECG14, ECG15, LFpulse, TENS1, TENS2, TENS3,

##### ✓ Autoelectro-Relevant Function:

IGNITION, ISO16750-2 SP, ISO16750-2 VR, ISO7637-2 TP1, ISO7637-2 TP2A, ISO7637-2 TP2B, ISO7637-2 TP3A, ISO7637-2 TP3B, ISO7637-2 TP4, ISO7637-2 TP5A, ISO7637-2 TP5B